



BLAKE VICKERS — RR

The Dry Dock has served as a community center for those in recovery in Richmond.

DOOR

Continued from A2

reimbursed for those costs through the grant.

Hunter and company have already redone the Dry Dock's attic space, took out all the old insulation, stabilized the crawl space of the building, and poured a new concrete foundation for the the building.

"We own this building and plan on keeping it for many years going forward," Hunter said. "The reason we want this place to be in good shape is because, visually, we want people to walk in that door and know that they matter. Like, we care enough to have a clean and welcoming space for them... and that door is the first thing they see."

They're hoping to raise \$3,000 to get the door, install it, and repair some of the brick masonry surrounding it. Pinson joked that the completed door will be "big enough to hold Jack too" in a reference to the end of Titanic.

The building was a biker bar before the Dry Dock took over in 2008. Since then, they've done everything they can to help people along every step of the journey into recovery. Both Hunter and Pinson have made that journey themselves. The former serves those in recovery or active addition by connecting them to whatever their greatest needs are.

"If their need is sober living, I can arrange for that. Sometimes its as simple as getting a pair of shoes. I reach out and find a resource and just

match people with what they need," Pinson said.

The Dry Dock maintains an active presence in the community. Whether that means finding opportunities for community service for its members or just giving them a fun night.

"We have a work service board that people can use. I know from my own personal experience that service work saved me. It gave me a direction to go in even before I knew what I was doing," Hunter said. "We always have pro social events too that are free to anyone who wants to come. We'll have chilli cooks offs and game nights. Really just anything that shows people that you can still have fun when you're sober and remember it the next day."

Construction begins on Mayde Road extension project

Special to the Register

The Kentucky Transportation Cabinet has begun construction on the Mayde Road extension project in Madison County.

Crews are preparing to install a new culvert as part of a project that will connect the existing Mayde Road to KY 1983/Menelaus Road at mile point 2.85.

At this time, there are no expected

traffic impacts for motorists, aside from increased construction truck traffic on nearby roads. Drivers are encouraged to use caution in the area and watch for construction vehicles.

Work is tentative and subject to change depending on weather, emergencies, and other factors.

For live traffic updates and road conditions, visit GoKY.ky.gov.

Auction

ABSOLUTE LIVE/ONLINE ESTATE

222 ACRES IN TRACTS – 2 HOUSES & BARN

SATURDAY, JULY 11TH @ 10:30 A.M.

998 & 1075 BROOKSTOWN RD., RICHMOND, KY

The owner of this prime farmland has authorized our firm to offer it at absolute auction.

TRACT 1 consists of 12.92 acres of crop and pasture land. It has approx. 780' of blacktop road frontage, city water and pond. This tract is improved with an older 1.5 story brick home. The home has living room, kitchen, 3 bedrooms, and 2 baths. It has an unfinished basement and shingle roof. This house is in need of repairs. In addition to the house, there are 2 older barns.

TRACT 2 measures 97.88 acres of which is mostly cleared cropland and pastureland. This tract has approx. 400' of road frontage and city water is available. This tract has a beautiful pond and offers multiple nice homesites.

TRACT 3 measures 84.05 acres. Again, this tract is primarily pasture and cropland. It has 805' of road frontage and city water is available. This tract has a barn.

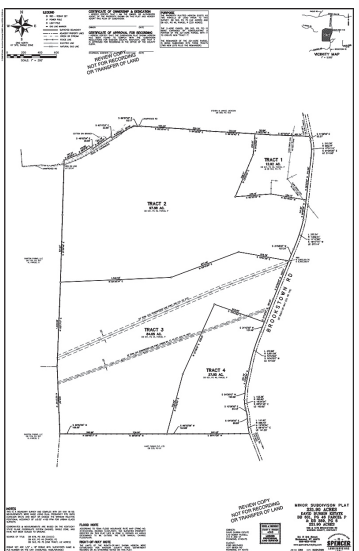
TRACT 4 has 27.05 acres, which is mostly pastureland with 1200' of frontage. This tract is improved with a single story brick. This house is in need of work.

AUCTIONEER'S NOTE: Here is one that offers it all. If you want a few acres with a fixer upper, a small farm or larger operating farm, here is your chance to buy it at your own price. Be sure to mark your calendar now to attend this absolute auction or bid online.

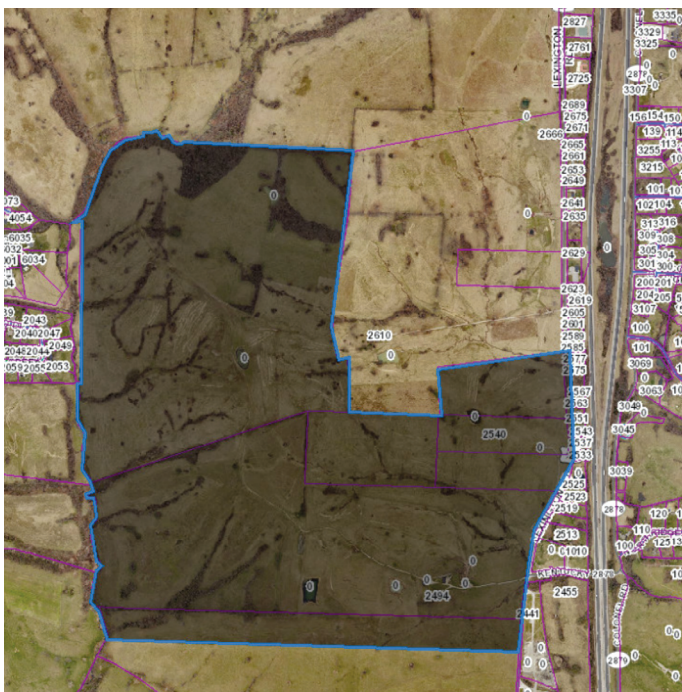
PREVIEW: Wednesday, July 1st & 8th from 2-5 p.m.

NOTE: The purchaser of a single-family residence built before 1978 has a maximum of 10 days to inspect the property of lead-based paint. The period for inspections begins July 1st through July 10th. The successful bidder must sign a waiver of the 10-day inspection period.

AUCTION PREMIUM: A 10% Auction Premium will be added to the winning bid to determine the final sale price.



PROPOSED LAND USE CHANGE



NOTICE OF PUBLIC HEARING

There will be a public hearing of the Madison County Planning Commission on **Tuesday July 21, 2026**

at the **Madison County Courthouse Annex, 1st Floor at 5:30 p.m.** The purpose is to consider a Land Use Change for **2494 Lexington Rd from UC-7 (Agricultural) to UC-5 (Industrial)** as shown on the map above. Contact the Madison County Planning and Development Office at 859-624-4780 for questions. Applications and other documentation may be found on the Madison County website at www.madisoncountky.gov under the Planning and Development tab.




 AUCTIONEERS: DANNY FORD AND DARRELL TATE
www.fordbrothersinc.com
 Richmond, KY
 800-435-5454

Richmond Register

To place your ad, please call 859-623-1669