

Looking back to May 18, 2018

Written by Mary Ann Kearns

The following information was entered into the May 18, 2018, edition of The Ledger Independent:

Turnout predictions mixed for Primary

As Kentuckians prepare to go to the polls Tuesday to vote in the Primary Election, local county clerks are gearing up for one of the busiest days of the year for their office.

Kentucky Secretary of State Alison Lundergan Grimes has projected a turnout of 30 percent or less of the 3.3 million people registered to vote in Kentucky for next week's Primary Election.

A turnout of 30 percent would represent the highest participation in a Kentucky Primary Election in nearly a decade, according to Grimes. Approximately 32 percent of Kentuckians voted in the 2010 mid-term Primary Election.

"Next Tuesday, I think you will see a Kentucky electorate that is beginning to get up, get out, and get loud with voters making their voices heard at the polls," said Grimes. "We have witnessed dismal levels of participation in the last few years — 20 percent in 2016, a presidential election, and only 12 percent in the last Governor's race in 2015. This year, I think we could see the number of Kentuckians going to the polls improving."

Locally, Bracken County Clerk Rae Jean Poe said she expects more voters to turn out this year than in the last primary, even though only Democrats will be on the ballot since there is no opposition for Republicans.

"Maybe 55-60 percent," Poe said. Even without Republican races there are still lots of local contests on the ballot, she said, including multiple candidates in the sheriff's, county clerk's and magistrate races.

"With so many people on the ballot, I feel like it's going to be pretty high," Poe said.

In the 2016 Primary Election, only 16.1 percent of Bracken County voters went to the polls.

In Mason County, that number was slightly higher at 18.1 percent in 2016. County Clerk Stephanie Schumacher was not available Thursday to make a prediction for her county but there are several races on the ballot which have generated lots of interest including the jailer's and county attorney's.

In Fleming County, Clerk Jarrod Fritz was out Thursday checking polling spots and getting keys to poll workers.

Fritz speculated that about 18 percent of Fleming County voters will cast ballots on Tuesday.

"It won't reach 20 percent," he said, explaining that getting voters out for primary elections is difficult. In 2016, 20.5 percent of voters turned out in Fleming County, according to information from the Board of Elections.

Also in 2016, Lewis County had a 13.9 percent response to the Primary Election ballot while 20.9 percent of Robertson County voters visited the polls.

Grimes tracks absentee ballot totals as an indicator of final turnout on Election Day. According to current statistics, Grimes projects turnout for the May 22 Primary Election will be about par with the mid-term elections of 2014 and 2010 when 26.8 percent and 32.2 percent of Kentuckians voted, respectively.

As of Monday, nearly 25,000 voters had voted in person on machines in county clerks' offices and approximately 12,000 mail-in absentee ballots were sent to voters who had requested them.

Grimes encourages voters to prepare to vote on May 22 by checking their polling places and viewing sample ballots at GoVoteKY.com, Kentucky's one-stop portal for voters.

"We need a majority of Kentucky voters deciding our Commonwealth's future, not a minority. I encourage every voter to cast their ballot in the Primary Election," Grimes said.

Polls in Kentucky are open from 6 a.m.-6 p.m. on Election Day. Voters who are unsure of their precinct should check with their county clerk.

The Vanceburg Mercantile

Submitted by Brenda S. Bear

Exciting news for downtown Vanceburg!

A wonderful new shop has opened in the heart of downtown Vanceburg!

Dane and Debbie Blankenship officially celebrated the grand opening of Vanceburg Mercantile on Friday, May 7. The couple purchased the historic George Morgan Thomas House in 2025 and have spent the past several months transforming it into a charming destination filled with antiques and collectibles.

Vanceburg Mercantile will be open Fridays and Saturdays from 10:00 a.m. to 5:00 p.m.

Stop by, browse their unique treasures, and support this exciting new shopping experience in Vanceburg.



Submitted by Brenda S. Bear
Dane and Debbie Blankenship with their new business, Vanceburg Mercantile.

Quinn Minute: Here's something to think about...

Rix Quinn

These little columns are mostly silly. But today I'm asking a serious question.

This is something an editor told me many years ago. Do you agree with it?

"A major minute is one that can change the course of a life almost immediately."

For instance, one minute you're standing outside a kindergarten class. The child standing next to you smiles, you greet him, and 40 years later you're still best friends.

Or, you sign up for a random history class in high school. The teacher's first lecture makes you decide you want to teach history too.

Seconds. Moments. Minutes. Charles Lindbergh takes his plane down the runway, and across the ocean in a world-changing adventure.

In the third game of the 1932 World Series, it takes Babe Ruth only seconds to point to the grandstands in center field where he will hit the next pitch. And he does it.

My job is interviewing people. One of the first questions I ask nearly everybody is this: "What major minutes — or decisions — completely changed the course of your life?"

I write a semi-regular column for Substack. It's free, and offers information about short stories and short writing. To sign up for the mailing list, just go to this link: <https://rixquinn.substack.com/>

Traffic Advisory: Paving on KY 161, Monday, May 18

Submitted by Kentucky Transportation Cabinet District 9

FLEMINGSBURG, Ky. (May 15, 2026) —On Monday, May 18, motorists should expect a daytime road closure on KY 161, beginning at 8:00 a.m. to 5:00 p.m. This will be a paving project from Mile Point 0.000 (KY 170) to Mile Point

1.448 (Fleming-Mason County Line). The work should take 1 day to complete.

Traffic can utilize KY 170 and KY 324 to navigate around the closure.

Road work schedules may be adjusted if inclement weather or other unforeseen delays occur.

Motorists are asked to heed all warning signs, slow down in work zones and remain aware of workers and construction equipment when traveling.

The work is being done by HG Mays, under a \$786,590.00 Kentucky Transportation Cabinet contract.

KDE celebrates NISL graduates and invites new applicants

Submitted by the Kentucky Department of Education

A total of 70 outstanding Kentucky educators who successfully completed the nationally-recognized National Institute for School and System Leadership (NISL) program during the 2025-2026 school year.

Offered through a long-standing partnership between the Kentucky Department of Education (KDE) and the National Center on Education and the Economy (NCEE), this leadership development experience equips

school and district leaders with skills, strategies and vision to drive meaningful and sustainable change in their learning communities. For more than 15 years, Kentucky leaders have been transforming schools through this rigorous and research-driven program.

This year's three cohorts represented a broad and diverse group of school leaders from across the Commonwealth including participants from 16 districts and the Kentucky Department of Education's educational recovery staff. These leaders engaged in robust learning sessions in Lexington and participated in monthly interactive experiences that focused on building

leadership capacity and transforming schools into high-performing environments that prioritize student success.

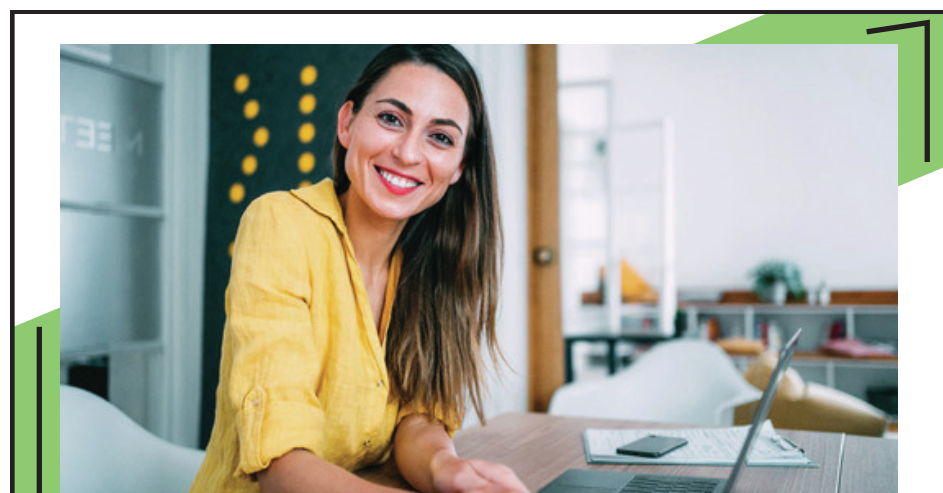
Todd Tucker, KDE educational recovery leader and NISL facilitator, reflected on the growth participants experienced throughout the program.

"Over ten months, these leaders sharpened their thinking, strengthened their commitment to students and proved that sustainable change starts with bold leadership," he said. "They leave with systems thinking, vision and the courage to lead lasting change in the schools and districts they serve. Congratulations to the graduates!"

NISL draws from the

world's top-performing education systems and emphasizes strategic thinking and data-informed decision making, a clear vision for student-centered learning, ethical leadership and continuous improvement and practice tools to lead system-wide change through the Action Learning Process.

Are you ready to take your leadership to the next level and join the growing community of Kentucky leaders making a lasting impact on education? School and district staff interested in joining this dynamic and transformative professional learning journey are encouraged to complete NISL interest form no later than June 1. Questions regarding the training opportunity should be directed to Charlotte Jones.



THE PEOPLE'S DEFENDER IS SEEKING A REPORTER TO JOIN OUR TEAM!

If you are passionate about small-town, community journalism, and reside in the Adams County area, you may be the candidate we are looking for! At Champion Media, our reporters are instrumental in writing stories for both news and features. Reporters also play a key role with special projects in conjunction with sister publications in nearby communities. Photography and social media skills are a plus.

Successful candidates should possess excellent writing, grammar and communications skills. We're looking for a team player that has a strong work ethic and takes pride in producing outstanding community news coverage.

This is a part-time position working approximately 30 hours per week.

If you are interested in gaining outstanding work experience as a small-town newspaper reporter, send cover letter, resume and at least three references to Publisher Karen Brown at kbrown@cmpapers.com

THE PEOPLE'S DEFENDER

206 N Pleasant St., West Union
937.544.2391

THE LEDGER INDEPENDENT

JENNIFER DONAHUE, Publisher
jdonahue@cmpapers.com, ext. 1240
LESLIE BAKER, Sales Manager
lbaker@cmpapers.com, ext. 1119
PEYTON DUNAWAY, Editor
pdunaway@cmpapers.com, ext. 1270
DANIEL MILLER, Sports Editor
dmiller@cmpapers.com, ext. 1273
CHAD SHELTON, Production/IT Manager
csheilton@cmpapers.com, ext. 1224

MELODY EVANS, Graphics/Pagination Manager, melodyevans@championcarolinass.com

News
Story ideas, news tips, etc., should be called in to the newsroom between 10 a.m. and 5 p.m. Call 564-9091.

Delivery Problems
Circulation Customer Service:
Monday-Friday 8 a.m. - 4:30 p.m.

Comments, Letters
The Ledger Independent welcomes and encourages comments from its readers on a wide variety of local, regional state, national and international issues. Letters to the editor should be typed, double-spaced and mailed to the Editor, The Ledger Independent, 120 Limestone St., Maysville, KY 41056. We welcome comments 24/7 at 606-564-9091 x1251. Please speak slowly and clearly when leaving a comment.
The newspaper reserves the right to edit all letters and comments for libelous, obscene or other inappropriate material.

Corrections
The Ledger Independent seeks to correct all significant errors brought to the editor's attention. If you have a question or correction on news coverage, contact Peyton Dunaway, editor.

Subscriptions
Periodical postage paid at Maysville, KY. I understand that delivery and billing will continue beyond the initial order period unless I contact the newspaper at 564-9091. Rates may change after introductory offer period. Subscription rates are subject to change.

Postmaster/Subscribers
Please send notice of address change or correction by enclosing mailing address label, plus new address, two to four weeks in advance to: The Ledger Independent, 120 Limestone St., Maysville, KY 41056.

Back Copies
Back issues of The Ledger Independent are for sale at our office at 120 Limestone St. in Maysville. The Ledger Independent keeps a file of back issues for at least one month and can often provide newspapers up to a year after publication.

Advertising
To purchase display or classified advertising in the The Ledger Independent, call one of the numbers listed above and an advertising representative will be happy to serve you.

Advertising Deadlines
Placement and cancellation deadlines for classified in-column line ads for Tuesday-Thursday are accepted until 2 p.m. the day before publication. Classified in-column ads for Saturday are accepted until 11 a.m. the day before publication. Ads for Monday are accepted until 2 p.m. the Friday before publication. Display advertising is accepted until 2 p.m. daily, 48 hours before publication date. Ads that require color, proofs or special camera work require an additional 24 hours added to the above deadline.

SJA Schumacher INSURANCE AGENCY

BUSINESS • LIFE • HEALTH • COMMERCIAL SPECIALIST
www.schumacherinsurance.agency



Eric Schumacher Owner

895 US 68 Maysville, KY 41056
129 West Miami St., Brooksville, KY 41004
58 South Main St., Mt. Olivet, KY 41064

Phone:
(606) 759-5663