

UK adds new transfers to the fold. B1.



The Winchester Sun



\$1.50 WEEKEND EDITION, APRIL 12-13, 2025 WINCHESTER, KENTUCKY VOL. 147, NO. 29

Clark County PVA speaks at Rotary Club

BY: MATT CIZEK

matt.cizek@winchestersun.com

Serving as Clark County Property Valuation Administrator (PVA), Jada Brady is always interested in informing the local community.

On Wednesday, April 9, she made her presence known in a positive manner.

Brady spoke to members of the Rotary Club of Winchester during their weekly meeting at the Winchester Country Club on 410 Boone Avenue.

"Thank you very much for having

me," Brady said. "I just thought I'd come by and tell you about some of the things that we've had going on in the PVA office."

During the course of her presentation, Brady covered various aspects of property valuation.

Among them, as has been previously covered, was the definition and implementation of fair cash value.

"We are required by the Kentucky state constitution to assess property at 100% fair cash value," she said, elaborating that this requires noting how much that property would be worth to someone else. "What we

do is we generally take sales from around your area, compare it to all those additional sales, come up with a price per square foot in most cases, and that's how we actually come up with your assessment value."

Brady also introduced information about three different assessment processes used - the cost/market approach, cost approach, and income approach - and reiterated that, while the cost/market approach is most common, the latter two may be utilized as well.

See **PVA**, on A2



Clark County PVA Jada Brady speaks at the most recent meeting of the Rotary Club of Winchester. (Photo by Matt Cizek).

GRC hosting musical theater production of "Chicago"

BY: MATT CIZEK

matt.cizek@winchestersun.com

George Rogers Clark High School looks to provide entertainment throughout the year.

When this week nears an end, attendees will have plenty of reasons

for excitement.

The annual spring musical, a teen edition of the Broadway play "Chicago", is coming to GRC for public viewing from Friday, April 11, through Sunday, April 13.

While the Friday and Saturday shows begin at 7:00 p.m., the Sunday show begins at 2:30 p.m.

"It is a huge part of our student body coming together to have this show come to life," said Kris Olson, music teacher and choral director at GRC. "Chicago" is a really iconic bit of music theater. It's one of the longest-running shows on Broadway."

See **MUSICAL**, on A2



The cast of "Chicago" rehearses leading up to their performance at George Rogers Clark High School. (Photo by Amy Harper).

GRC returns from spring break with regional wins

BY: MATT CIZEK

matt.cizek@winchestersun.com

During George Rogers Clark High School's spring break, the Cards' baseball team (6-6) traveled to Florida while the Lady Cards (10-1) stayed local - with both playing several games.

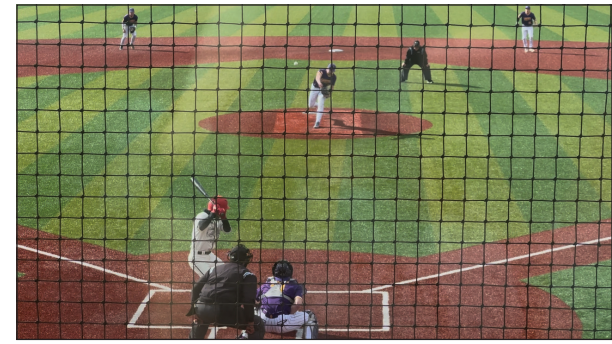
After the school's return, each got off to a solid start against fellow 10th Region opponents.

The Cards rebounded from a 1-3 road trip against some top-notch competition with a dramatic 8-7 victory over Campbell County on Monday, April 7, while the Lady Cardinals - one day after a victory over 12th Region opponent Lincoln County - came through with a dominant 11-0 win against Paris.

"You've got two great teams playing against each other, and...[what] looks to be a possible region [tournament] matchup," said GRC's Eddie Brooks following the Cards' victory. "Neither team's wanting to die, and that's what you expect by two great ball teams."

"We came out [and] took care of business," said GRC's softball coach Matt Puckett. "I think they did a good job of going ahead and getting the task done."

See **GRC**, on A2



GRC's Brady Freeman during the team's home victory against Campbell County. (Photo by Matt Cizek).

Clark Regional Medical Center publishes 2024 Community Benefit Report

SPECIAL TO THE SUN

Clark Regional (CRMC) published its community benefit report for the 2024 calendar year on Wednesday. This annual report outlines the various ways the hospital is working to support the health and economic vitality of Clark County and beyond as part of its mission of making communities healthier.

"For more than 13 years, Clark Regional Medical Center has been proud to call Winchester our home, and as a leader in our community, we are committed to providing high-quality care close to home, investing in our region's overall well-being and making a positive impact on those we serve," said Matt Smith, chief executive officer (CEO) of Clark Regional Medical Center. "This year's report

underscores our ongoing commitment to providing the highest quality care possible - both inside and outside our hospital walls."

Clark Regional's 2024 community benefit report highlights its continued efforts to meet the growing healthcare needs of its community through welcoming new providers, adding and expanding service lines and continually investing in its facilities and

healthcare technology. For example, in 2024, CRMC added multiple providers in behavioral health, radiology, outpatient bariatrics and more; and made nearly \$8 million in capital improvements, including the expansion of the Intensive Care Unit (ICU) and adding the da Vinci robotic surgical system.

Additionally, Clark Regional Medical Center donated nearly

\$28 million for uncompensated care, including the unreimbursed costs of Medicare and Medicaid, charity care and patient financial assistance to individuals in need of health services. This demonstrates CRMC's continuous commitment to ensuring everyone has access to care, regardless of their ability to pay.

See **REPORT**, on A2

QUALITY METAL ROOFING & STEEL BUILDING SALES

- Churches
- Homes
- Garages
- Commercial buildings
- Farm Steel Buildings
- Recreational Steel Buildings
- Steel Building Hangars
- Steel Building Parts & Materials



**COST EFFECTIVE....
LOW MAINTENANCE....
FIRE RESISTANT**

We are an American owned company that manufactures an all American made product. Our metal buildings are unique, multipurpose facilities designed around the owners many uses. You can play in it, stay in it, manufacture, truck, stable, farm, shop, build a loft, or fellowship in it! We believe that customer satisfaction, quality, low price and easy construction guarantees you the best buy available.

KYSTEEL.COM



COME VISIT OUR SHOWROOM!

150 Harrod Drive, Winchester, KY 40391
859-745-0606
Hours: Monday - Friday 8:00 am - 4:30 pm

