

0100 ANNOUNCEMENTS

Omaha Steaks Wines. 12 world class wines (and bonus gifts) for ONLY \$79.99 (plus s/h.) Save \$160! 12 new wine selections plus a FREE \$25 Omaha Steaks E-reward card every three months. Cancel anytime. 100% guarantee! Call 1-844-740-5945 and mention code AGJF002 or visit www.GetOSWine.com/sip169

HEALTH
Portable Oxygen Concentrator May Be Covered by Medicare! Reclaim independence and mobility with the compact design and long-lasting battery of Inogen One. Free information kit! Call 888-982-0374

Stroke and Cardiovascular disease are leading causes of death, according to the American Heart Association. Screenings can provide peace of mind or early detection! Contact Life Line Screening to schedule your screening. Special offer - 5 screenings for just \$149. Call 1-877-465-1309

HOME IMPROVEMENT
SunSetter. America's Number One Awnning! Instant shade at the touch of a button. Transform your deck or patio into an outdoor oasis. Up to 10-year limited warranty. Call now and SAVE \$350 today! 1-866-348-8793

NEED NEW WINDOWS?
Drafty rooms? Chipped or damaged frames? Need outside noise reduction? New, energy efficient windows may be the answer! Call for a consultation & FREE quote today. 1-833-890-2083. You will be asked for the zip code of the property when connecting.

Replace your roof with the best looking and longest lasting material - steel from Erie Metal Roofs! Three styles and multiple colors available. Guaranteed to last a lifetime! Limited Time Offer - up to 50% off installation + Additional 10% off install (for military, health workers & 1st responders.) Call Erie Metal Roofs: 1-888-306-0302

WARNING: Your home may need new Siding, Windows or Roofs. SAVE MONEY before the hurricane drives prices back up and it's too late. Huge Discounts & Financing available. 800-350-0591 to learn more. Eliminate gutter cleaning forever! LeafFilter, the most advanced debris-blocking gutter protection. Schedule a FREE LeafFilter estimate today. 20% off Entire Purchase. Plus 10% Senior & Military Discounts. Call 1-866-329-2415

Call LeafGuard and say goodbye to gutter cleaning for good. No cleaning. No leaking. No water damage. No more ladder accidents. Get LeafGuard today and be protected for life. FREE estimate. Financing available. 20% off total purchase (Restrictions may apply.) Call 1-866-850-6999

Safe Step. North America's #1 Walk-In Tub. Comprehensive lifetime warranty. Top-of-the-

0100 ANNOUNCEMENTS

line installation and service. Now featuring our FREE shower package and \$1600 Off for a limited time! Call today! Financing available. Call Safe Step 1-888-302-4539

Jacuzzi Bath Remodel can install a new, custom bath or shower in as little as one day. For a limited time, waiving ALL installation costs! (Additional terms apply. Subject to change and vary by dealer. (Offer ends 6/30/25.) Call 1-866-837-5986

HOME SERVICES
Prepare for power outages with Briggs & Stratton® PowerProtect(TM) standby generators - the most powerful home standby generators available. Industry-leading comprehensive warranty - 7 years (\$849 value.) Proudly made in the U.S.A. Call Briggs & Stratton 1-877-548-2927.

Prepare for power outages today with a Generac Home Standby Generator. Act now to receive a FREE 5-Year warranty with qualifying purchase. Call 1-844-688-8576 today to schedule a free quote. It's not just a generator. It's a power move

INSURANCE SERVICES
Up to \$15,000.00 of GUARANTEED Life Insurance! No medical exam or health questions. Cash to help pay funeral and other final expenses. Call Physicians Life Insurance Company- 844-950-2448 or visit www.Life55plus.info/kypress

DENTAL INSURANCE from Physicians Mutual Insurance Company. Coverage for 400 plus procedures. Real dental insurance - NOT just a discount plan. Do not wait! Call now! Get your FREE Dental Information Kit with all the details! 1-855-900-7392

www.dental50plus.com/26#6258

INTERNET OFFERS
Choose EarthLink Fiber Internet for speeds up to 5 Gigs, no data caps, no throttling. Prices starting at \$54.95. Plus, a \$100 gift card when you make the switch. Call 1-833-974-4780

MUSICAL INSTRUMENTS
TOP CASH PAID FOR OLD GUITARS! 1920-1980 Gibson, Martin, Fender, Gretsch, Epiphone, Guild, Mosrite, Rickenbacker, Prairie State, D'Angelico, Stromberg. And Gibson Madolins/Banjos. 1-833-641-7011

SECURITY
HOME BREAK-INS take less than 60 SECONDS. Don't wait! Protect your family, your home, your assets NOW for as little as 70¢ a day! Call 1-833-360-5407

SOCIAL SECURITY
YOU MAY QUALIFY for disability benefits if you are between 52-63 years old and under a doctor's care for a health condition that prevents you from working for a year or more. Call now! 1-833-641-6772

WATCHES
PAYING TOP CASH FOR MEN'S SPORT WATCHES!

0100 ANNOUNCEMENTS

Rolex, Breitling, Omega, Patek Philippe, Heuer, Daytona, GMT, Submariner and Speedmaster. Call 1-833-641-6058

WRITERS WANTED
Become a Published Author. We want to Read Your Book! Dorrance Publishing-Trusted by Authors Since 1920 Book manuscript submissions currently being reviewed. Comprehensive Services: Consultation, Production, Promotion and Distribution Call for Your Free Author's Guide 1-855-209-2951 or visit dorranceinfo.com/Kentucky

0600 REAL ESTATE FOR RENT

WALNUT COURT APARTMENTS BENTON HOUSING

Now accepting applications for 1 bedroom units. Must be 62, handicapped or disabled.

Phone (270) 527-3626

The Housing Authority of Benton (E.H.O.)

The Housing Authority of Benton is now accepting applications for 0 to 4 bedroom apartments in Benton and Calvert City.

For more information, call 527-3626

Working Families, handicapped & elderly receive first preference



Find it all in the Classifieds

0900 LEGALS

PUBLIC NOTICE
The second reading of a proposed Ordinance relating to the annual budget will be held on April 15, 2025 in the Marshall County Fiscal Courtroom, 1101 Main St., Benton, KY. A copy of the proposed ordinance with full text is available for public inspection at the Office of the County Judge/Executive during normal business hours.
Kevin Spraggs, Judge/Executive

Unknown Claimants of Abandoned Roads in Running Bear Subdivision are hereby given notice a Complaint is filed in Marshall Circuit Court, Case No. 25-CI-00109, Benton, KY by Plaintiff Shelter Point Trust and each claimant has fifty (50) days from 3/24/2025 to file an answer to the complaint and if not then an Order/Judgment may be entered in their absence.

Double YOUR IMPACT with Print & Online ADVERTISING!

0900 LEGALS

LEGAL NOTICE MARSHALL DISTRICT COURT
TIFFANY FRALICX GRIFFITH, CLERK
80 JUDICIAL DRIVE, UNIT 101 BENTON, KY 42025

THE FOLLOWING ESTATE FIDUCIARY APPOINTMENTS HAVE BEEN MADE IN THE MARSHALL DISTRICT COURT BY DISTRICT JUDGE JACK TELLE. ALL CLAIMS AGAINST THESE ESTATES MUST BE PRESENTED WITHIN 6 MONTHS OF DATE OF QUALIFICATION IN ACCORDANCE WITH THE KENTUCKY REVISED STATUTES.

3/20/2025 AMANDA BRASHER, 111 CHICKASAW BLUFF ROAD BENTON KY 42025 IS APPOINTED ADMINISTRATRIX FOR THE ESTATE OF GARY FREEMAN, 291 SUNSHINE ACRES BENTON KY 42025. ATTORNEY KIP MATHIS, PO BOX 450 BENTON KY 42025.

3/21/2025 REBECCA BLACKWELL, 2155 OAK LEVEL ROAD BENTON KY 42025 IS APPOINTED EXECUTRIX FOR THE ESTATE OF DOLORES SAMSON, 2155 OAK LEVEL ROAD BENTON KY 42025. ATTORNEY ERIC LONG, PO BOX 447 BENTON KY 42025.

THE FOLLOWING FIDUCIARY ESTATES HAVE FILED FINAL SETTLEMENTS. THE SETTLEMENTS MAY BE REVIEWED IN THE CLERKS OFFICE. ANY PERSONS DESIRING TO FILE EXCEPTIONS TO A FINAL SETTLEMENT MUST DO SO WITHIN 10 DAYS OF THIS ADVERTISEMENT IN ACCORDANCE WITH THE KENTUCKY REVISED STATUTES.
BRYAN LOFTON, ADMINISTRATOR FOR THE ESTATE BILLY CONNELL.

Looking for a new friend? Help a shelter pet find their forever home!



Absolute REAL ESTATE AUCTION

FRIDAY, APRIL 11TH @ 10 AM
774 Poplar Springs Dr., Murray, KY 42071

3 Bedroom, 2 Bath Home
8± ACRES
in 2 Tracts
SEPARATE OR COMBINED

Conveniently Located Just One Mile From **KENTUCKY LAKE!**



Nestled just one mile from the scenic shores of Kentucky Lake, this charming 3-bedroom, 2-bathroom brick home offers the perfect blend of comfort, convenience, and country living. Sitting on approximately 8 acres of picturesque land, this property boasts a cozy gas log fireplace, a covered front porch, and a spacious 2-car attached garage with extra storage. Recent upgrades, including a brand-new electrical system (2024), a 30-year roof (installed 9 years ago), and an updated HVAC system, ensure modern reliability. Outdoor enthusiasts will appreciate the expansive acreage, ideal for recreation or simply enjoying nature. Additional features like a mudroom with washer/dryer hookups, a stock barn, and city water service make this home a rare find.

Don't miss your chance to own a beautiful home near Kentucky Lake with ample land and premium

Real Estate Tracts

Tract 1	3-BDRM 2 BA Home on 4.74 Acres
Tract 2	3.24 Acres

REAL ESTATE TERMS: The property will be offered in 2 tracts. A 10% Buyer's Premium will be added to the final bid and included in the deed transaction sale price. 15% as down payment on the day of the auction with balance in cash at closing on or before 30 days. The down payment may be in the form of cashier's check, personal check, or corporate check. The property will be sold by the deed.

HARRIS HOMES - FARMLAND ESTATES - WATERFRONT
Real Estate & Auction

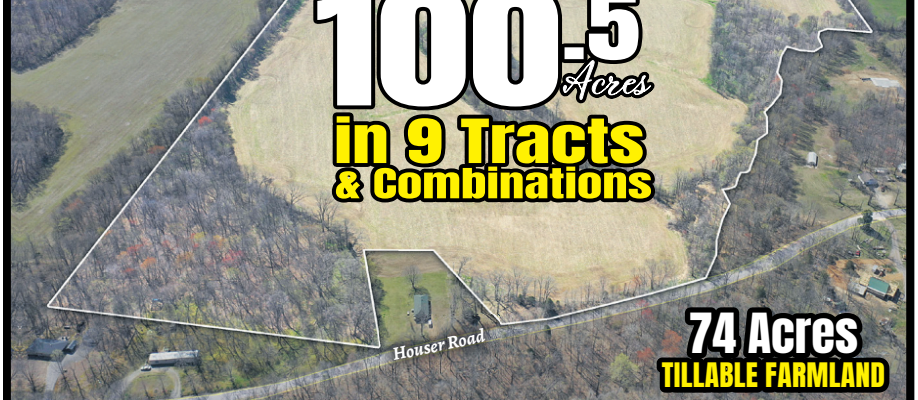
MICHAEL HARRIS
PRINCIPAL BROKER
PRINCIPAL AUCTIONEER
KL# 252972 | KY Broker# 198374

Phone: 270-247-3253 Toll Free: 800-380-4318 harrisauctions.com

Absolute LAND AUCTION KNOWN AS THE SHEMWEEL FARM

TUESDAY April 29th, 2025 @ 6:00 PM

Houser Rd & Tom Lane Rd Benton, KY 42025



100.5 Acres in 9 Tracts & Combinations

74 Acres TILLABLE FARMLAND

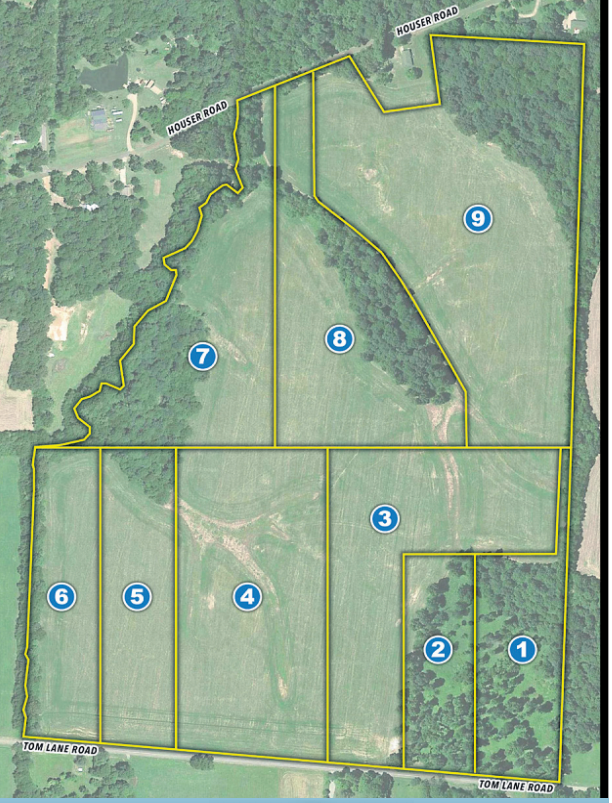
Marshall County Agriculture Extension Office
2081 Mayfield Hwy, Benton, KY 42025

AUCTION WILL BE HELD AT

This property spans a total of 100.5 acres and is available in nine tracts, which can be purchased individually or in combinations. Of the total land, 74 acres are dedicated to tillable farmland, making it ideal for agricultural use. With convenient road frontage on Houser Road and Tom Lane Road in Benton, KY, the property offers excellent accessibility. Additionally, it presents various opportunities, including prime building sites, mini-farm development, and potential pond construction.

REAL ESTATE TRACTS

Tract 1	6.63 Acres
Tract 2	4.85 Acres (Great for pond development)
Tract 3	12.79 Acres
Tract 4	14.69 Acres (Great for pond development)
Tract 5	7.13 Acres
Tract 6	6.51 Acres
Tract 7	11.61 Acres
Tract 8	12.59 Acres
Tract 9	23.72 Acres



REAL ESTATE TERMS: The property will be offered in 9 individual tracts, any combination of tracts, or as a whole property. The property will be sold in the manner resulting in the highest total sale price. A 10% buyer's premium will be added to the final bid price & included in contract price. A 15% deposit is due day of auction, balance due in 30 days. The property is being sold on an "AS IS, WHERE IS" basis, and no warranty or representation, either express or implied, concerning the property is made by the Seller or Auction Company. Each potential bidder is responsible for conducting his or her own independent inspections, inquiries, and due diligence concerning the property. Make Inspections Prior To Date Of Sale.

HARRIS HOMES - FARMLAND ESTATES - WATERFRONT
Real Estate & Auction

MICHAEL HARRIS
PRINCIPAL BROKER
PRINCIPAL AUCTIONEER
KL# 252972 | KY Broker# 198374

Phone: 270-247-3253 Toll Free: 800-380-4318 harrisauctions.com

TIME TO CLEAN OUT THE GARAGE!

GARAGE SALE

Place your ad today!