

LOCAL BRIEFS

VISIT WITH SANTA
Only one Visit With Santa remains. Visit Santa on December 11 from 6-7:30 p.m. at the Springfield Opera House.

BEAUTIFUL MUSIC OF CHRISTMAS
December 6-14, 2025
Celebrate the joyous season with family and friends for the songs of the season with Mid Kentucky Chorus and Instrumentalists.
Highly anticipated each year, this Central Kentucky favorite event brings joy and even some laughter to all. Remaining performances are:
Friday, Dec. 12 at 7:30 p.m. at St. Joseph Cathedral, Bardstown
Sunday, Dec. 14 at 3:00 p.m. at St. Catharine Hall Motherhouse

WITS WORKOUT
Please join us at the Washington County Public Library for our continuing Wits Workout Series. The next class, Songbirds, will be December 12 at 10 a.m. at the public library.

YOUNG RIDERS
Washington County 4-H "Young Riders" will meet on December 15 at 6:30 p.m. at the Extension Office on Corporate Drive. You do not have to own a horse to join. All 4-H aged youths are welcome.

LIVESTOCK CLUB
The Washington County 4-H Livestock Club has started it's year, but it's not too late to join. The next meeting will be at 6 p.m. on December 15. All are welcome to attend.

PUBLIC RETIREES CHRISTMAS CELEBRATION
Lincoln Trail Chapter of the Kentucky Public Retirees will hold its annual Christmas celebration on December 15, 2025, 11:30 AM, at Shoney's, 1046 Executive Drive, Elizabethtown KY. Please note this is a revised date and location for this meeting. Members are encouraged to wear their KPR shirts and bring a \$15 wrapped Dirty Santa gift. POC: Sandy Allen, 270-307-0061.

LET'S TALK ONLINE JOB FAIR
Hosted by Kentucky Career Center – Lincoln Trail
Tuesday, Dec. 16; 1 – 3:30 p.m.
Registration is required at www.LTCareerCenter.org/JobFair
Job seekers are invited to connect virtually with employers. Employers interested in participating are asked to contact the Kentucky Career Center at (270) 766-5115.

HERITAGE HOMEMAKERS
The Heritage Homemakers, headquartered at the extension office, is open to all homemakers that are looking to get more involved in their community and enjoy great fellowship. Our next gathering will be Wednesday, December 17, at noon at the extension office. It will be a holiday pot luck.

FREE STROKE SCREENING DAY
Spring View Hospital is proud to offer a FREE community stroke screening on Thursday, December 19, from 10 a.m. – 3 p.m. at the Marion County Public Library.
During this event, a clinical team will be:
Checking blood pressures
Reviewing stroke risk factors
Sharing important education on how to recognize and reduce your risk of stroke
No appointment is needed.

COOKIES WITH SANTA AND THE GRINCH
The Washington County baseball team will host Cookies with Santa and the Grinch on Saturday, Dec. 20, at the TEL Center from 11 a.m.-1 p.m.
The cost for Cookies with Santa and the Grinch is \$5. Cookies with Santa and the Grinch will serve as a fundraiser for the Washington County High School baseball team.

HOLIDAY ASSISTANCE
Washington County's Holiday Assistance program is up and running. If you would like to donate cash or gift cards to make a better holiday season for our community's children,

call the extension office at 859-336-7741. We have a record number of tags this year.

CAIP/YAIP/NEXT-GEN
The Washington County Extension Office will be closed for the holidays from December 24-January 4. If you, or someone you know, needs CAIP/YAIP/Next-Gen education papers signed, please make plans to stop in on or before December 23.

CONCERT AT LORETTO MOTHERHOUSE
Susan VonHoven, flute, and Vernon Cherrix, piano, will play at the Loretto Motherhouse on Monday morning, December 29, at 10:30 a.m. All are welcome. No charge.

WHEELBARROW SERIES
The wheelbarrow series 2026 catalog will be out soon.

4-H
The new 4-H year has kicked off in Washington County. Stop by the extension office to pick up a participation form.

BEE CLUB
The Washington County Bee Keepers Club meets the first Monday of each month at the Extension Office. All are welcome to attend.

BEST SEWERS IN TOWN
Washington County 4-H "Best SEWer's in Town" Sewing club will be meeting at 4 p.m. every Thursday at the extension office.

AGRICULTURE & NATURAL RESOURCES
The ANR newsletter is mailed out the first week of each month. To sign up to receive this newsletter send your name and address to kara.lewis@uky.edu or call the extension office at 859-336-7741. You can also find this newsletter and others on the website: washing-ton.mgcafe.uky.edu

EXTENSION ON THE RADIO
Every Tuesday morning around 8:30 a.m. you can tune into 100.9 WLSK and get all the latest news and happenings from the extension office.

WITS WORKOUT CLASSES
Free Wits Workout classes will be held at the Washington County Public Library on the first and third Fridays of each month at 10 a.m. In Wits Workout, we will learn about brain health and exercise our wits with fun games! Classes are taught by Cabrina Buckman. Please call the Washington County Extension Office at 859-336-7741 with any questions. You do not have to register — join in when you can.

KNIGHTS OF COLUMBUS BINGO
Knights of Columbus bingo is played every Wednesday at 7 p.m., doors and concessions open at 5 p.m. Features a progressive jackpot starting at \$500 and going up every week until won. Bingo tabs available on site. This is charitable gaming, and all proceeds are donated back to charities. Call 859-336-9967 for additional info.

SURVIVOR OF SUICIDE SUPPORT GROUP
Survivor of Suicide support group meets the first Thursday of the month from 6-7 p.m. at the Boyle County Library. This group is for adults who have had friends or family members die by suicide. The group serves Boyle and surrounding counties.

BOARD OF ELECTIONS
The Washington County Board of Elections will hold its monthly meeting the 3rd Tuesday of each month at 10 a.m. at the County Clerk's Office.

DEMOCRATIC WOMEN'S CLUB
The Democratic Women's Club meets the third Saturday of every month at the Washington County Public Library, from 11 a.m. to 12 p.m. All are welcome.

SPRINGFIELD TOURISM
Springfield Tourism Meet-

ings are the 4th Monday of each month, at 5:30 p.m. at the Opera House. All regular meetings are open to the public.

VAN SERVING THOSE WHO SERVED
The Disabled American Veterans transport van leaves from the Lebanon McDonald's by 7:15 a.m. every Monday & Thursday, then proceeds to the Springfield Hardee's and Bardstown Burger King. Riders need to set up medical appointments through the VA and notify the DAV transport coordinator before they ride. Veterans who wish to ride on the Lebanon van Mondays or Thursdays should call 502-780-3247. There is no charge for riding the van.

HAVE AN ANNOUNCEMENT?
Announcements in the Brief Section are FREE. Email them to editor@thespringfield-sun.com by 5 p.m. the Friday before you want it to run.

CONTACT INFORMATION FOR The Springfield Sun

CIRCULATION
Newspaper Subscriptions and Delivery
859-336-5905 (Alice)
awalker@thespringfieldsun.com

NEWS
Letters to the Editor
270-887-3242 (Jane)
editor@thespringfieldsun.com

COMMUNITY
Social news (including, wedding, birth, anniversaries, club news, etc.)
270-887-3242 (Jane)
editor@thespringfieldsun.com

OBITUARIES
Obituaries- obits@thespringfieldsun.com

CLASSIFIEDS ADVERTISING
Yard Sales, items for sale in classifieds
859-336-3716 Ext. 2

RETAIL ADVERTISING
Legals, memory, card of thanks
859-336-5905 (Alice)
awalker@thespringfieldsun.com

Office Hours by Appointment Only Starting 2/1/2023

ABSOLUTE AUCTION SAT. DEC. 13TH, 10 A.M.

GAFFNEY CUSTOM HOMES, LLC 12.87 ACRES IN 7 TRACTS EXCELLENT HOME SITES RANGING FROM .74 TO 5.86 ACRES

Location:
75 GOATLEY LANE, SPRINGFIELD, KY. 40069
(PHYSICAL ADDRESS IS FOR LOCATION PURPOSES ONLY.)

DIRECTIONS: FROM SPRINGFIELD, TAKE BLOOMFIELD ROAD (HWY 55) NORTH ABOUT 5 MILES TO BEECHLAND ROAD ON THE RIGHT. TURN RIGHT AND GO ABOUT 1 ½ MILES TO GOATLEY LANE. TURN LEFT ON GOATLEY LANE AND THE PROPERTY IS ON THE LEFT.

REAL ESTATE: Selling 7 nice tracts of land in Washington County ranging in size from .74 Acres to 5.86 Acres. All these tracts have good road frontage and would make very desirable home sites. City water and electric is available. Located in a nice rural setting where you can buy one or a combination the tracts to have your own mini farm.

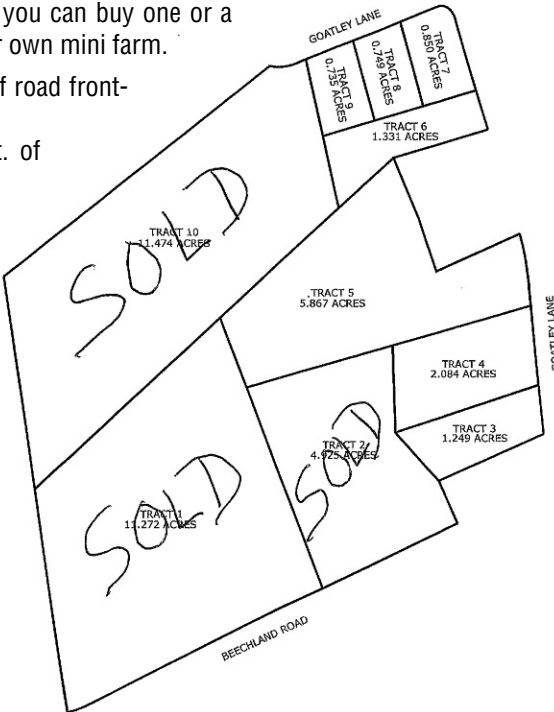
Tract #3: 1.25 Acres with 136 ft. of road frontage.
Tract #4: 2.08 Acres with 220 ft. of road frontage and a small pond.
Tract #5: 5.87 Acres with 200 ft. of road frontage.
Tract #6: 1.33 Acres with 112 ft. of road frontage.
Tract #7: .85 Acres with 383 ft. of road frontage.
Tract #8: .75 Acres with 140 ft. of road frontage.
Tract #9: .74 Acres with 140 ft. of road frontage.

AUCTIONEERS NOTE: Don't miss this opportunity to purchase some or all of these Tracts being sold at **ABSOLUTE AUCTION** where the final bid sets the price.

TERMS: Real Estate - 20% Down the day of sale and the balance with deed and possession on or before January 13th, 2026. There will be a 10% Buyers premium added to the final bid of everything sold to determine the total sales price.

"ALL ANNOUNCEMENTS MADE DAY OF SALE TAKE PRECEDENCE OVER ANY ADVERTISEMENT."

BISHOP REALTY & AUCTION LLC.
www.BishSells.com
502-252-5528



Catch This! You always score when you subscribe!

The Springfield Sun
Inspiring And Informative Local News
About Your Family, Your Friends, And Your Community

1 Year Subscription for \$29.99
PLUS KY SALES TAX
All Access Includes The Springfield Sun Print Edition & 24/7 @ pmg-ky2.com/springfield/

Don't Delay - Order Today! Local delivery area only.
Offer Expires February 7th, 2026!
1 Year \$29.99 + \$1.80 KY Sales Tax = \$31.79

YOUR BILLING INFORMATION

NAME _____
ADDRESS _____
CITY _____
STATE _____ ZIP _____ HOME/PHONE _____
EMAIL _____
CELL PHONE _____
CREDIT/DEBIT CARD # _____
EXPIRES (MM/YY) _____ CVV# _____
(Last 3 digits on back of card)

2 WAYS TO SUBSCRIBE!

- **CALL**
859-336-3716
- **CLIP & MAIL**
P.O. Box 1480
Owensboro, KY 42302

All information and payment required to receive this special non-refundable offer. Offer only available to new subscribers in our local delivery area who have not had a subscription in the last 3 months. If you respond to this offer but do not qualify for introductory pricing, the expiration date will be prorated to match the payment to your current rate. Your subscription includes 24/7 digital access to all content available online. Your subscription expiration stop is automatic after a 28-day grace period. All rates include KY sales tax, where applicable. Yes, I authorize The Springfield Sun to instruct my credit/debit card company to debit my credit/debit card account as I have requested above. Hurry! Offer expires February 7th, 2026.