

Calling song of the cicada can be deafening

BY GREG THOMPSON
PAXTON MEDIA GROUP

Betty Swartout had concerns about cicadas invading, possibly damaging her vegetable garden.

The Sonora resident and her friend Cathy Laird both thought it a good idea to attend a presentation on the emerging, noisy insects Friday morning at the Hardin County Public Library in Elizabethtown.

Hosted by the Hardin County Cooperative Extension Service, they both discovered the information they were looking for and a lot more.

Amy Aldenderfer, Extension agent for horticulture, assured Swartout there is nothing to worry

about, the cicadas won't cause any harm to her garden.

"They're not harmful," Aldenderfer said. "People shouldn't be afraid of them; they're not disease-ridden."

The cicadas cause no harm at all to pets or humans. Aldenderfer says they actually are a good source of protein and edible for humans.

"They apparently taste like shrimp," she said. "And they're Atkins-friendly."

Native Americans found them to be an abundant food source.

Anyone with a food allergy to shell fish, however, should not eat the insects.

During the presentation, Aldenderfer said they are fascinating creatures. Those recently coming out of finger-

size holes in the ground or from small mud castles, are Brood 14 of the 17-year cycle cicadas.

Living only six to eight weeks, cicada begin emerging from the ground when the soil temperature 12 inches below the surface reaches around 68 degrees.

Laird is not so concerned about the cicadas coming out of the ground at her home.

"The chickens are taking good care of them," Laird said.

In a long pen, once they get turned loose those chickens turn into a group of "happy campers" running around devouring the cicadas.

"Yeah, it's funny to watch them," Laird said. "They'll even fight over 'em."

According to Aldenderfer, it's the male cicada making all of the noise. The males have what is called a tymbal on the abdomen. The sound is made when air is blown through.

With hundreds of male cicada simultaneously singing their calling song, they are alerting all of the females within ear shot that they are ready to get jiggy and begin the mating ritual.

Females, in reply will offer a flick of their wings.

Aldenderfer says, "They're not very good at flying" and they look rather awkward fluttering over to the chosen female.

With three different species, the calling song takes place in the morning, around

midday or in the afternoon, "that way they don't cross species."

Each species will hear only the calling song of their own.

Females will spend a couple of weeks laying eggs reinventing the population that will emerge in another 17 years.

"Then they all die happy," Aldenderfer said.

At that point there remains hundreds, thousands of cicada carcasses which then will feed the trees which they used for mating.

Interesting to note, according to Aldenderfer, you can tell by looking at the rings of a tree when the cicada population have emerged over time due to the widening of the growth rings.

Mayberry Day June 14 in Owenton

Get ready for a return visit from Andy and Barney when Mayberry Day returns to Owenton on June 14 from 10 a.m. to 2 p.m.

The annual event, which again this year will feature music by The Darlins and Rick Johnson, will be held at 100 North Thomas Street.

Join the fun by entering the dress as your favorite character contest and food served up by The Bluebird Diner, Morelli's, coffee and soda at Walker's Drug Store and a fish fry.

There will also be a baking contest.

The event is presented by the Owen County Chamber of Commerce.

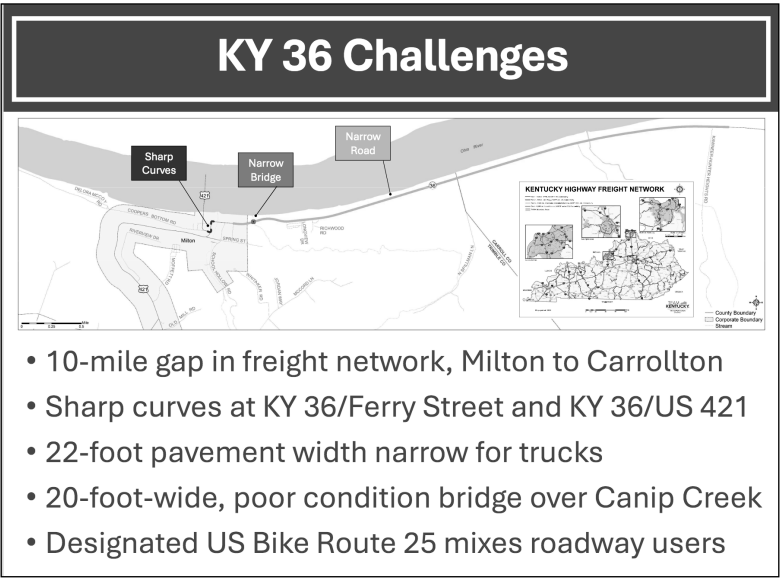
KYTC

FROM **PAGE A1**

various timelines for project components.

With the development of heavy industry in Carroll County, KY Highway 36 has become a major route to the Milton-Madison Bridge for both industries and workers commuting to jobs. Currently that road is not designated as an approved freight mobility road due to three factors — sharp curves, narrow pavement and a narrow bridge at Canip Creek on the outskirts of Milton east of town. As a result, some trucking haulers are forced to go around Carrollton to US 421 to access the Ohio River bridge to Indiana.

Several proposals to redesign the bridge approach and study upgrades to the road have been conducted in the past including a basic planning study in 1995, a National Environmental Policy Act study in 2008, a bike/pedestrian study in 2012 and in 2015 there was an approach design study with



no building in the plan. More recently, in 2023 a University of Kentucky capstone study project of downtown Milton was completed and will be included in the current study.

According to Kentucky Transportation Cabinet team members, the new study currently being conducted is in the beginning stages to define the scope of the potential

project.

In this phase the public is being presented with various maps and statistics and several panels were displayed Tuesday to share that information. One panel shows the 7% grade at Milton Hill — one of the steepest in highway construction — areas where the hill is becoming prone to landslides, visualization of the sharp curves

on the hill and potential alternatives to keeping US 421 in its current form.

Another board detailed the number and types of vehicular crashes that have taken place and where they occurred on the roadway, which extends for more than two miles into Carroll County on KY 36. From 2019 to 2023 there were 192 crashes — 120 on US 421 and 72 on KY 36.

There were two crashes involving fatalities — both by impaired drivers — plus 27 injury accidents. Twenty-one of the crashes involved trucks. Due to the narrow bridge at Canip Creek, there were 11 crashes with 64% of those being opposite direction sideswipes. At the sharp turn where KY 36 accesses the Milton Boat Ramp there were six crashes and another three at Tiber Creek. A color-coded legend shows exactly where and what type of accident took place on each highway.


As the study progresses, the team will be sensitive to several context areas such as historic resources, recreational spaces, churches, cemeteries, farmlands, wildlife

habitats and utility infrastructure.

After the informational session at Milton City Hall, the panels were relocated to the Trimble County Public Library where they will remain throughout the public survey period ending June 8. Those who were unable to attend the public meeting are encouraged to visit the library and examine the panels for a better understanding of the scope and focus of the project. They are also encouraged to take the survey on how individuals perceive the need or scope of the planning study.

Copies of the survey are also at the library, or the survey can be found at transportation.ky.gov. On the homepage, find District 5 on the map, Trimble County in the list of counties and Milton Small Area Planning Study to view components of the study.

"We hope those who did not attend the meeting will take the time to look at the project panels at the Trimble County Public Library and take time to fill out the survey," said Rebecca Thompson, project manager. "The project depends on public input."



LEGAL NOTICE

NOTICE TO TRIMBLE COUNTY TAXPAYERS

TINA R. BROWNING, TRIMBLE COUNTY CLERK

PURSUANT TO KRS 424.130, ANNOUNCES THAT THE

2024 DELINQUENT REAL PROPERTY TAX BILLS

(CERTIFICATES OF DELINQUENCY WILL BE PUBLISHED

IN THE TRIMBLE BANNER ON JUNE 13th, 2025.

THE LIST OF CERTIFICATES OF DELINQUENCY

IS ALSO AVAILABLE FOR PUBLIC INSPECTION

DURING THE HOURS OF

MON., TUES., THURS., & FRI., 8:30 AM- 4:30PM

AND WED. 8:30 AM UNTIL NOON

AT THE COUNTY CLERK'S OFFICE

LOCATED AT 30 HWY 42 EAST, BEDFORD, KY 40006.

THIS LIST MAY ALSO BE INSPECTED ON

THE SOFTWARE MANAGEMENT WEBSITE. THE UNIFORM RESOURCE

LOCATER (URL) OF THE WEBSITE IS KYDTAX.SMLLC.US.

THE TAX SALE WILL BE HELD ON JULY 17, 2025 BEGINNING AT 10:00 AM.

ALL INTERESTED PARTICIPANTS MUST REGISTER

WITH THE COUNTY CLERK'S OFFICE

BY THE CLOSE OF BUSINESS ON JULY 7th, 2025.

PLEASE CONTACT THE COUNTY CLERK'S OFFICE

IF YOU NEED ADDITIONAL INFORMATION

ABOUT THE TAX SALE REGISTRATION PROCESS,

THE REQUIRED REGISTRATION FEE

OR THE DEPOSIT AMOUNTS THAT WILL BE NEEDED.

TAXPAYERS CAN CONTINUE TO PAY THEIR DELINQUENT TAX BILLS

TO THE COUNTY CLERK'S OFFICE ANYTIME PRIOR TO THE TAX SALE.

PLEAST NOTE: ALL PAYMENTS MUST BE RECEIVED IN THE COUNTY

CLERK'S OFFICE PRIOR TO THE TAX SALE DATE

LISTED IN THIS ADVERTISEMENT.

PAYMENTS RECEIVED AFTER THE TAX SALE

HAS BEEN CONDUCTED WILL BE RETURNED WITHOUT EXCEPTION.

SOME DELINQUENCIES- ALTHOUGH THEY HAVE BEEN ADVERTISED-

WILL BE EXCLUDED FROM THE TAX SALE

IN ACCORDANCE WITH THE PROVISIONS OF KRS 134.504(10)(b).

IF YOU HAVE ANY QUESTIONS,

PLEASE DO NOT HESITATE TO CONTACT

THE COUNTY CLERK'S OFFICE AT 502-255-7174.