

Heird hints Governor’s Cup game could move to season opener

BY RUSS BROWN
KENTUCKY TODAY

LOUISVILLE — Could Louisville-Kentucky football be going retro? Since 2014, the annual Governor’s Cup battle between U of L and UK has been played on the final weekend of the regular season, known as Rivalry Week throughout college football. But that could apparently change in the future.

During a recent appearance on ESPN Louisville radio (ESPN 680), U of L Athletic Director Josh Heird hinted the showdown could move to its original date at the beginning of the season, although he didn’t say how soon it might happen.

The two programs have played every year since 1994, with the exception of 2020 because of the COVID-19 pandemic. The Wildcats and Cardinals played six times from 1912-1924, then didn’t meet again for 70 years. The modern series is tied 15-15 after U of L snapped a five-game losing streak by winning last year’s game in Lexington, 41-14.

The Cards’ longest winning streak is also five, from 2011-2015. The Wildcats lead the overall series 20-16. Next season’s game is scheduled for Nov. 29 in L&N Stadium. The Cards will open at home against Eastern Kentucky on Aug. 30.

Like U of L-UK, most of the best rivalries are played at the end of the season, including Alabama vs. Auburn, Michigan vs. Ohio State, Indiana vs. Purdue, Alabama vs. Auburn and many others.

“But there still are a handful of those rivalry games at the beginning of the year,” Heird said on the radio show. “CU (Colorado), CSU (Colorado State), I know is always at the beginning of the year. I do think it creates more excitement, because everybody has hope at the beginning of the year.

“I think that’s one where, let’s continue to have those conversations as far as where it makes the most sense for Louisville-Kentucky to be, as opposed to just, ‘Well, that’s Rivalry Week. Everybody plays on the last week of the year.’ Continue to explore everything. Fortunately, we’re at a time in this industry where we can just rethink everything that we’re doing.”

The impetus for renewing the series came from the late Howard Schnellenberger’s and former U of L Athletic Director Bill Olsen’s efforts in the early 1990s. Talks fell through in 1991, but during a trip to Lexington a couple years later, they convinced UK Athletic Director C.M. Newton and Coach Bill Curry that the time was right and would be beneficial for both programs.

Olsen and Schnellenberger proposed an arrangement they thought would entice UK: Kentucky would host every game until Louisville moved from old Cardinal Stadium at the Kentucky Fair and Exposition Center to a new on-campus stadium. UK agreed and the first four games were played in Commonwealth Stadium (now Kroger Field), with the Wildcats winning three.

“At that time Kentucky had plans to renovate their stadium and I think it was an attractive proposal to C.M. because he wanted the opportunity to play Louisville and us bring the fan following,” Olsen told *The Courier-Journal* in 2019. “It was, ‘we will be happy to do that’, and then we signed the contract.”

The process wasn’t quite that simple, though. For years, UK didn’t want to add U of L to a demanding SEC schedule that included tough games against Georgia, Florida, South Carolina and Tennessee among other challenging league opponents.

ROBBINS

FROM PAGE B1

CAMPBELLSVILLE 8, BARDSTOWN 2

After falling behind 2-0 in the top of the third, the host Eagles scored eight unanswered runs to top the Tigers Monday night.

Bardstown went ahead in the third, when Lucas Kiser hit a two-out, two-run single to drive in Preston Ferriell and Landen Snellen. But Campbellsville took the lead for good in the bottom half of the inning as Ty Burwash hit a sacrifice fly to plate a run, Jack Ellis hit a two-run triple and Cayton Lawhorn drove in a run on a groundout.

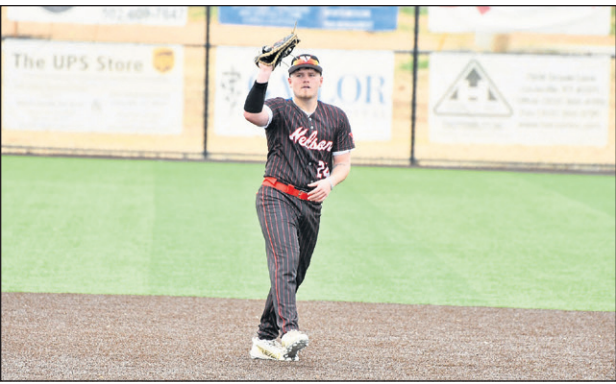
Kiser had two hits and two RBIs to pace the Tigers, while Caleb Nalley and Colton Metcalfe each had a single.

Bardstown, which lost for the eighth time in nine games, fell to 3-15 overall on the season. The Tigers, who played at region rival Fort Knox Tuesday night, play at region foe North Hardin at 6 p.m. Thursday and at Shelby County at 6 p.m. Friday.

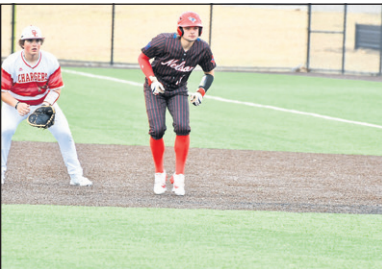
19TH DISTRICT STANDINGS

With just over a week left in the regular season, seeding for the district tournament remains unsettled.

Nelson County is 5-1 in the district, with Washington County close behind at 4-2. The Cardinals and Commanders are followed by Thomas Nelson (3-3),



BRANDI STONE/Contributing Photographer
Nelson County's Ethan Rogers catches a pop fly Friday at Bullitt East.



Nelson County's Kaden Stone (right) takes his leadoff from a first base in Friday's game at Bullitt East.

BRANDI STONE/Contributing Photographer

Bethlehem (2-4) and Bardstown (2-6). Only the Tigers are done with their district slate.

GARAGE SALE
5295 Louisville Rd., Bardstown across from Greer Estates. Saturday, May 10th, 8am. Antique, vintage, tools, porcelain dolls, horse drawn equip., and more!

LEGAL NOTICE

Probate Notice of Appointments
The following Fiduciaries have been appointed in the Nelson District Court. Any claims against the following Estates should be presented to the named fiduciary **before October 25, 2025.**

21-P-183 Estate of Henry Louis Mitchell, 2769 Icetown Road, Boston, KY 40107. 4/25/25 Brian Mitchell, 2927 Nepperhan Rd., Louisville, KY 40218 appointed Executor. Attorney Thomas Hamilton, PO Box 327, 212 E. Stephen Foster Ave., Bardstown, KY 40004.

25-P-134 Estate of Mary D. Humphrey, 428 Susannah Ave., Bardstown, KY 40004. 4/25/25 Clarence Calvin Humphrey, 428 Susannah Ave., Bardstown, KY 40004 Appointed Administrator. Attorney Thomas Hamilton, PO Box 327, 212 E. Stephen Foster Ave., Bardstown, KY 40004.

LEGAL NOTICE

The following motor vehicle is stored at Eric Hayden's Collision & Towing. 962 Bloomfield Rd., Bardstown KY. 502-349-0053 will be accepting sealed bids to recover towing and storage fees on Wednesday, May 14, 2025 @ 10:00 AM. Titles are not warranted, subject to prior liens, and all sales are final. The seller reserves the right to bid. CASH ONLY
2019 Ford Escape (White) VIN#1FMCU0F73KUA95389 Bartley, Amy M
1011 BRITTANY DR
BARDSTOWN KY 40004-8952
Consumer Portfolio Services Inc
PO BOX 57071 IRVINE, CA IRVINE CA 92619

LEGAL NOTICE

Boston Gasoline LLC with a mailing address of **12365 Boston Rd. Boston KY 40107** hereby declares intention(s) to apply for a **NQ Retail Malt Beverage Package License(s)** no later than **May 30, 2025**
The licensed premises will be located at **12365 Boston Rd. Boston Kentucky 40107** doing business as **Boston Mart**
The (owner(s); Principal Officers and Directors; Limited Partners; or Members) are as follows: **Owner, Rb Sharma of 3784 Stolen Horse Trace, Lexington KY 40509**
Any person, association, corporation, or body politic may protest the granting of the license(s) by writing the Dept. of Alcoholic Beverage Control Mayo-Underwood Building 500 Mero St., 2NE33 Frankfort, Ky. 40601, within 30 days of the date of this legal publication.

FREE ESTIMATES • FULLY INSURED • SERVING CENTRAL KENTUCKY

- Tree & Stump Removal
- Trimming / Dead Wooding
- Lot Clearing
- Bucket Truck Service
- Crane Services
- Bobcat Services
- 24/7 Emergency Service

Residential & Commercial
502-827-8766
boblitttreeservice@live.com

EMPLOYMENT
WCLC is looking for employees. Requirements are as follows...
1. Be 18 years of age with reliable transportation
2. Experience working with livestock (cattle, sheep, goats, hogs, etc).
3. Be available on Monday and Friday
 1. Monday- 8 a.m. until the sale is over.
 2. Friday- 8 a.m. until the sale is over.
4. On sale days there ay be a need to work later until trucks are loaded after sale.
5. Payday is twice a month on the first and fifteenth.
Contact..
Co-Manager Jeff Shewmaker - 859-481-4510
Co- Manager Johnny Wheatley- 859-336-4310

LEGAL NOTICE
PUBLIC NOTICE
BUDGET HEARING REGARDING PROPOSED USE OF COUNTY ROAD AID AND LOCAL GOVERNMENT ECONOMIC ASSISTANCE (LGEA) FUNDS

A public hearing will be held by the Nelson County Fiscal Court in the second floor meeting room at the Old Courthouse on May 20, 2025, at 6:00 PM for the purpose of obtaining citizens comments regarding the possible uses of the County Road Aid (CRA) and Local Government Economic Assistance (LGEA) Funds.

All interested persons in Nelson County are invited to the hearing to submit verbal or written comments on possible uses of the CRA and LGEA Funds. Comments may also be submitted via email to judge@nelsoncountky.gov. Any person(s) who cannot submit written comments or attend the public hearing but wish to submit comments, should call the Office of the County Judge Executive at 502-348-1800 by May 16, 2025, so that arrangements can be made to secure their comments

NOTICE TO CUSTOMERS OF KENTUCKY UTILITIES COMPANY

RECOVERY BY ENVIRONMENTAL SURCHARGE OF KENTUCKY UTILITIES COMPANY'S 2025 ENVIRONMENTAL COMPLIANCE PLAN

PLEASE TAKE NOTICE that in an April 30, 2025 Application, Kentucky Utilities Company (“KU”) is seeking approval by the Kentucky Public Service Commission (“Commission”) in Case No. 2025-00105, pursuant to Kentucky Revised Statute 278.183, of an amended compliance plan (“2025 Plan”). (Collectively, KU’s Application and supporting testimony and exhibits are KU’s “tariff filing.”) If approved, KU will begin recovering capital costs associated with a new pollution control facility in the 2025 Plan under KU’s existing Electric Rate Schedule ECR (also known as the Environmental Surcharge tariff) through an increase in the environmental surcharge on customers’ bills beginning in December 2025.

KU filed an application with the Commission on February 28, 2025, in Case No. 2025-00045 seeking approval to construct a selective catalytic reduction system at the Ghent generating station to reduce nitrogen oxide (NOx) emissions, which are a precursor to ozone. In Case No. 2025-00105, KU is seeking an order approving the 2025 Plan to recover the costs of this new pollution control facility through its Environmental Surcharge tariff. This project will help ensure ongoing compliance with regulations issued under the federal Clean Air Act as amended, including the National Ambient Air Quality Standards for ozone.

The estimated total capital cost of this new pollution control facility is \$152.3 million. Additionally, KU is requesting recovery of future incremental capital and operation and maintenance expenses associated with this new pollution control facility. KU is also asking to recover the cost of publishing this customer notice through the Environmental Surcharge over 12 months and to have Environmental Surcharge recovery of future Commission-approved administrative expenses, including customer notice costs.

Beginning in December 2025, the initial bill impact for KU’s Group 1 customers is estimated to be a 0.01% increase with a maximum increase of 0.81% in 2029. Group 1 includes Rate Schedules Residential Service (RS), Residential Time-of-Day Energy Service (RTODE), Residential Time-of-Day Demand Service (RTODD), Volunteer Fire Department Service (VFD), All Electric School (AES), and all Lighting Rates (i.e., LS, RLS, LE, and TE).

RS and VFD customers using 1,085 kWh/month could expect a monthly increase of \$0.01 up to \$1.09. RTODE customers using 1,043 kWh/month could expect a monthly increase of \$0.01 up to \$1.14. RTODD customers using 987 kWh/month could expect a monthly increase of \$0.02 up to \$1.80. AES customers using 25,620 kWh/month could expect a monthly increase of \$0.30 up to \$24.28. LS and RLS customers could expect a monthly increase of \$0.00 up to \$0.12. LE customers using 2,473 kWh/month could expect a monthly increase of \$0.02 up to \$1.59. TE customers using 147 kWh/month could expect a monthly increase of \$0.00 up to \$0.15.

Beginning in December 2025, the initial bill impact for KU’s Group 2 customers is estimated to be a 0.01% increase with a maximum increase of 1.10% in 2029. Group 2 includes Rate Schedules General Service (GS), General Time-of-Day Energy Service (GTODE), General Time-of-Day Demand Service (GTODD), Power Service (PS), Time-of-Day Secondary Service (TODS), Time-of-Day Primary Service (TODP), Retail Transmission Service (RTS), Fluctuating Load Service (FLS), and Outdoor Sports Lighting Service (OSL).

GS customers using 1,657 kWh/month could expect a monthly increase of \$0.03 up to \$2.41. GTODD customers using 19,652 kWh/month could expect a monthly increase of \$0.31 up to \$25.26. PS-Secondary customers using 30,434 kWh/month could expect a monthly increase of \$0.39 up to \$32.35. PS-Primary customers using 35,028 kWh/month could expect a monthly increase of \$0.45 up to \$36.82. TODS customers using 189,538 kWh/month could expect a monthly increase of \$1.54 up to \$126.82. TODP customers using 1,242,574 kWh/month could expect a monthly increase of \$8.25 up to \$678.42. RTS customers using 7,387,224 kWh/month could expect a monthly increase of \$38.91 up to \$3,199.31. FLS-Transmission customers using 44,229,667 kWh/month could expect a monthly increase of \$237.46 up to \$19,525.53. OSL-Secondary customers using 4,627 kWh/month could expect a monthly increase of \$0.17 up to \$13.87.

The Application described in this Notice is proposed by KU, but the Commission may issue an order resulting in an environmental surcharge for customers other than the environmental surcharge described in this Notice.

Comments regarding KU’s 2025 Plan and Application may be submitted to the Commission through its website or by mail to the Public Service Commission, Post Office Box 615, Frankfort, Kentucky 40602.

Any person may submit a timely written request for intervention to the Public Service Commission, Post Office Box 615, Frankfort, Kentucky 40602, establishing the grounds for the request including the status and interest of the party. If the Commission does not receive a written request for intervention within thirty (30) days of the initial publication of this Notice, the Commission may take final action on the Application.

Any person may examine KU’s tariff filing at the Commission’s offices located at 211 Sower Boulevard, Frankfort, Kentucky, Monday through Friday, 8:00 a.m. to 4:30 p.m., or through the Commission’s website at <http://psc.ky.gov> or KU’s website (<http://www.lge-ku.com>) after KU makes its tariff filing on April 30, 2025. KU has requested a deviation from the requirement to make the tariff filing available at its office at One Quality Street, Lexington, Kentucky 40507. If the Commission denies that request, KU will make the tariff filing available at its office upon request by any person.