

**Left:** Thomas Nelson's Justin Parsley hangs on to make a running catch in Tuesday's win at 19th District rival Bardstown. **Right:** Bardstown's Caleb Nalley (left) prepares to tag Thomas Nelson's Mason Dobson on Tuesday night.

# SWEEP

FROM PAGE B1

## THOMAS NELSON 14, BARDSTOWN 3

The visiting Generals scored nine runs in the top of the seventh Tuesday evening, turning a two-run lead into a lopsided victory to complete the district sweep of the Tigers.

Mason Dobson went 3 for 3 with a double, an RBI and a run, while Cole Girdley was 2 for 5 with a triple, three RBIs and two runs.

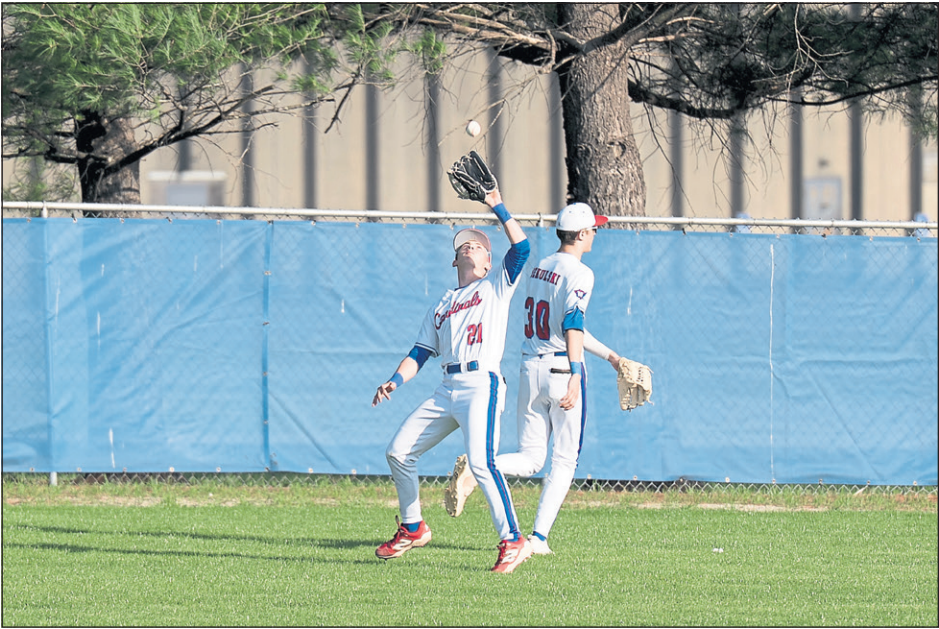
Rylen Keith was 2 for 4 with a double, three RBIs and three runs for Thomas Nelson, which finished with 12 base hits and won for the fifth time in six games.

Ethan Casey worked 3 2/3 innings for the win, striking out five. He gave up seven walks, two earned runs and one hit. Girdley struck out six over 3 1/3 innings to pick up the save.

Lucas Kiser had a single and an RBI to pace Bardstown, while Landon Snellen singled once and scored once.

The Generals improved to 6-5 overall and 3-1 in the district. Thomas Nelson, which played Pendleton County and Paris on Saturday, plays at Caverna at 5:30 p.m. Monday and at Cornerstone Christian at 5:30 p.m. Tuesday.

The Tigers dropped to 2-9 overall and 1-3 in the district. Bardstown, which hosted South Oldham Friday night, hosts Wash-



Nelson County's Trenton Gagel (21) catches a fly ball in Tuesday's win over Washington County.

ington County at 6 p.m. Monday and plays at the Commanders at 5:30 p.m. Tuesday.

## BETHLEHEM 6, LEXINGTON BLUEGRASS UNITED 5

Deegan Brown singled to drive in Nolan Robinson in the bottom of the seventh, sending the Eagles to a walkoff win over Bluegrass United on Tuesday night.

Brown's hit capped a wild comeback for Bethlehem (10-8), which trailed 5-2 entering the final inning.

The Eagles loaded the bases with nobody out in the bottom of the seventh. Robinson was hit by a pitch to force in a run, and then Cam Drake singled

to center to drive in Brady Matherly and Ethan Gibbs to tie it at 5-all.

After a strikeout, walk and another strikeout, Brown came through with two outs to give Bethlehem the win.

Brown and Gibbs each had a pair of hits for the Eagles, who have alternated wins and losses over

their past six games.

Matherly struck out 11 to earn the win on the mound. He gave up eight hits, five earned runs and two walks.

Bethlehem, which hosted 5th Region rival Marion County Saturday, plays at Nelson County at 5:30 p.m. Monday and hosts the Cardinals at 5:30 p.m. Tuesday.

Peddlers Mall  
Since 1988

Scan Here to Vote

Vote For Us!  
Bardstown Peddlers Mall...

**2025 Best of Nelson County Awards**

"BEST ANTIQUE STORE"

# LEGAL NOTICE

State of Minnesota  
County of Dakota

First Judicial District  
Court File Number: 19HA-FA-23-229  
Case Type: Dissolution with Children

In Re the Marriage of:  
Shaquell M Holiday-Page  
Name of Petitioner  
And  
Anthony Eugene Page Jr  
Name of Respondent

Summon Without Real Estate

THE STATE OF MINNESOTA TO THE ABOVE-NAMED RESPONDENT:

**WARNING: Your spouse has filed a lawsuit against you for dissolution of your marriage. A copy of the paperwork regarding the lawsuit is served on you with this summons. This summons is an official document from the court that affects your rights. Read this summons carefully. If you do not understand it, contact an attorney for legal advice.**

1. The Petitioner (your spouse) has filed a lawsuit against you asking for dissolution of your marriage (divorce). A copy of the Petition for Dissolution of Marriage is attached to this Summons. There should also be a copy of Petitioner's Financial Affidavit attached.

2. You must serve upon Petitioner and file with the Court a written Answer to the Petition for Dissolution of Marriage and your Financial Affidavit. You must pay the required filing fee. Answer forms and the Financial Affidavit form is available from the Court Administrator's office. You must serve your Answer and Financial Affidavit upon Petitioner **within thirty (30) days** of the date you were served with this Summons, not counting the day of service. If you do not serve and file your Answer and Financial Affidavit, the Court may give your spouse everything he or she is asking for in the Petition for Dissolution of Marriage.

3. This proceeding does not involve real property

**NOTICE OF TEMPORARY RESTRAINING PROVISIONS**  
Under Minnesota law, service of this summons makes the following requirements apply to both parties to the action, unless they are modified by the court or the proceeding is dismissed:  
(1) Neither party may dispose of any assets except (a) for the necessities of life or for the necessary generation of income or preservation of assets, (b) by an agreement of the parties in writing, or (c) for retaining counsel to carry on or to contest this proceeding.  
(2) Neither party may harass the other party.  
(3) All currently available insurance coverage must be maintained and continued without change in coverage or beneficiary designation.  
(4) Parties to a marriage dissolution proceeding are encouraged to attempt alternative dispute resolution pursuant to Minnesota law. Alternative dispute resolution includes mediation, arbitration and other processes as set forth in the district court rules. You may contact the court administrator about resources in your area. If you cannot pay for mediation or alternative dispute resolution, in some counties, assistance may be available to you through a nonprofit provider or a court program. If you are a victim of domestic abuse or threats as defined in Minnesota Statutes, Chapter 518B, you are not required to try mediation and you will not be penalized by the court in later proceedings.  
**IF YOU VIOLATE ANY OF THESE PROVISIONS, YOU WILL BE SUBJECT TO SANCTIONS BY THE COURT.**

**NOTICE OF PARENT EDUCATION PROGRAM REQUIREMENTS**  
Under Minnesota Statutes, Section 518.157, in a contested proceeding involving custody or parenting time of a minor child, the parties must begin participation in a parent education program that meets minimum standards promulgated by the Minnesota Supreme Court within 30 days after the first filing with the court. In some Districts, parenting education may be required in all custody or parenting proceedings. You may contact the District Court Administrator for additional information regarding this requirement and the availability of parent education programs.  
Dated: 05/02/23

/s/ Shaquell M Holiday-Page  
Petitioner's Signature  
Name: Shaquell M Holiday-Page  
Street Address: 408 Cari Park Lane  
City/State/Zip: Hastings, MN 55033  
Telephone: 763-353-4618  
E-mail Address: sholiday12494@gmail.com

# EQUIPMENT AUCTION

## KY TRUCK TRACTOR & TRAILER AUCTION - BOONE FARMS

### ONLINE BIDDING ENDS WED, APRIL 23, 11AM ET

Boone Farms is liquidating a portion of their truck and trailer fleet including (10) Sleeper Cabs, (6) Day Cabs, and (7) Hopper Trailers. All units are located in Hodgenville, KY. Truck inventory includes International, Freightliner, Peterbilt & Kenworth Models. Trailers include Timpit & Wilson Models.

### ONLINE AUCTION

**Wed, April 16, 11AM ET – Bidding Opens**  
**Wed, April 23, 11AM ET – Bidding Closes**

View on BidSpotter

View on Proxibid

**PUBLIC INSPECTION:**  
April 16th to 11:00am to 3:00pm

Edward D. Durnil, KY Auctioneer #259408/Broker #187998  
18% Buyer's Premium & Other Terms Apply

Contact Jonathan Curl at 270-734-2595 or [jcurl@tranzon.com](mailto:jcurl@tranzon.com) for more details.

# ABSOLUTE LAND AUCTION

Thursday, May 8th, 2025 @ 12 PM (EST)

Auction Held @ **SAMUELS HALL** - Nelson Co. Fairgrounds  
2389 NEW HAVEN RD, BARDSTOWN, KY 40004

FARMS ARE LOCATED IN THE TOWNS OF:  
**Boston, New Haven, Raywick & Campbellsville, KY**

- Prime Location in Bourbon Country - The farms contribute to Kentucky's world-renowned bourbon industry.
- Fertile Land along Rolling Fork Creek - Enhances soil quality and water access.
- High-Quality Tillable Acreage - Ideal for row crops, grain production, or investment opportunities.
- Excellent Accessibility - Conveniently located near major highways for transportation and logistics.

**714.5 ACRES IN 5 FARMS**  
THE ESTATE OF AARON REDING

**Farm 1 • 85.7 Acres**  
NELSON COUNTY, KY

**62.47 TILLABLE**

**Farm 2 • 285.5 Acres**  
NELSON COUNTY, KY

**287.55 TILLABLE**  
BY FSA MAPS

**Farm 3 • 83.37 Acres**  
NELSON COUNTY, KY

**77.78 TILLABLE**

**Farm 4 • 107.65 Acres**  
MARION COUNTY, KY

**93.62 TILLABLE**

**Farm 5 • 152.29 Acres**  
MARION COUNTY, KY

**146.78 TILLABLE**

**TERMS AND CONDITIONS** - The property will be offered in 5 individual farms. A 10% Buyer's Premium will be added to the final bid and included in the deed transaction sale price. 15% as down payment on the day of the auction with balance in cash at closing on or before 30 days. The down payment may be in the form of cashier's check, personal check, or corporate check. YOUR BIDDING IS NOT CONDITIONAL UPON FINANCING, SO BE SURE YOU HAVE ARRANGED FINANCING, IF NEEDED, AND ARE CAPABLE OF PAYING CASH AT CLOSING. Closing shall take place on or before 30 days from auction date. All 2025 ad valorem taxes will be prorated at closing. The property will be sold by the deed.

**FARM RIGHTS:** Immediate Planting Privileges granted day of auction with Buyer(s) escrow deposit of 15% down.

**FOR FULL TERMS GO TO harrisauctions.com**

**HARRIS**  
Real Estate & Auction  
[harrisauctions.com](http://harrisauctions.com)

PRINCIPAL BROKER  
PRINCIPAL AUCTIONEER  
TTL 5624 | TN Broker# 280718  
KLP 252972 | KY Broker# 198374  
3855 St. Rt. 45 N, Mayfield KY 42066  
**270-247-3253**

IN PARTNERSHIP WITH

**ERIC RICHARDS**  
AUCTION MANAGER  
**317-557-1376**  
[ericrichards@landpro.com](mailto:ericrichards@landpro.com)