

Classifieds

# Marketplace



COVERING LINCOLN COUNTY SINCE 1860

TheInteriorJournal.com

119 W Main Street • Stanford, KY 40484 • 606-661-5009

To place a Legal/Public notice, email info to: public.notices@theinteriorjournal.com

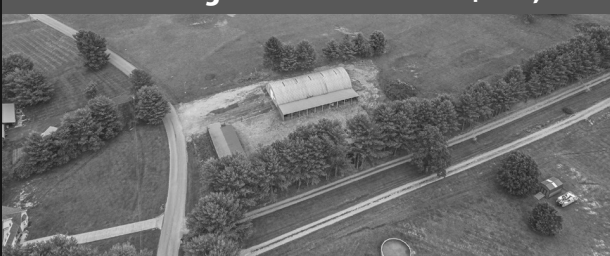
## PUBLISHED RESERVE ONLINE AUCTION

### HERRINGTON LAKE BOAT STORAGE

171 S HOMESTEAD LANE, LANCASTER, KY

**BID ONLINE MAY 15<sup>TH</sup> - 22<sup>ND</sup>**

**Sells to the Highest Bidder Above \$499,000**



• **1.4± Acres, 6,000± SF building, and 7,000± SF of slips per PVA**

• **Only Commercial property in the Neighborhood, and no more allowed**

• **Extra acreage owned next door to build homes owned by the seller**

**502-939-0399**

**svnMenish.com**

**Bill Menish, SVN Auction Services**  
**Neal Metcalfe, Senior Advisor, SVN**  
**All SVN® Offices Are**  
**Independently Owned and Operated**



## Employment

### Job Opportunities

**Cooperative Extension Service**

**EXTENSION STAFF ASSISTANT**  
Lincoln County  
RE50109

Deadline: **May 19, 2025**

Apply online at:  
<https://ukjobs.uky.edu/postings/581088>

Fro assistance call:  
**(606)365-2459**

*The University of Kentucky is an Equal Opportunity Employer. The address of the College of Agriculture, Food and Environment EEO Officer is Room S-105 Agricultural Science Building North, University of Kentucky, Lexington, KY 40546-0091.*

**Do you have available jobs?**

Call 606-661-5009 to let others know about job opportunities at your business.

## Job Opportunities

**LEE'S FAMOUS RECIPE CHICKEN**  
**STANFORD LOCATION**

Now Hiring All Skill Levels:  
Multiple Positions

Competitive Pay Offered

Applications available for pick-up at:  
**127 Plaza Road**  
**Stanford, KY 40484**

Senior Community Service Employment Program  
Learn new skills to prepare for work with paid, on-the-job training.

**OPEN POSITIONS**  
Location: Lincoln & Boyle Counties  
Accepting applications for part-time positions.  
Must be:  
•55+ years of age  
•Meet low income guidelines  
•Looking for employment  
**LET US HELP YOU RE-ENTER THE WORKFORCE!**  
**270-823-6193**  
**www.goodwill.org/SCSEP**

## Merchandise

### Farm Equipment & Supplies

Do you have property, land, or a farm you need help with? Call the classifieds to find the help you need! We will help advertise what you need! 606-661-5009

## Notices

### General Notices

**398 JIM WEAVER**  
Absolutely no trespassing of any kind including hunting, trapping, 4-wheeling and horseback riding on the property of Ernest Puckett located at 398 Jim Weaver Road, Crab Orchard. Not responsible for any accidents. No cutting trees, no spraying on property. Violators will be prosecuted. 9/26/24

**NO TRESPASSING:** Located 3780 KY HWY 328 W EUBANK, KY 42567 Posted 8/1/2024

**NO TRESPASSING VIOLATORS WILL BE PROSECUTED**  
**PROPERTY OWNERS**  
**BILL & TAMMY HELTON**  
945 SOUTH HARMONSLICK RD.

## General Notices

No Trespassing or Hunting on property belonging to Curtis Compton located on Berry Hollow Rd & Woodlawn Ln in Stanford, KY.

**NOTICE: NO TRESPASSING & NO HUNTING**  
As of: April 29th 2025, absolutely no trespassing or hunting on the property of: 676 Parker Road Eubank, KY 42567

## Rentals

### Apartments

**HUSTONVILLE ELDERLY APARTMENTS**

Now Accepting Applications!

Housing for the Elderly, Disabled & Handicapped.

\*Rent Based on Income  
\*Kitchen Appliances  
Furnished, Water, Sewer & Garbage Paid  
\*Laundry Facilities on Site  
\*For Applications, call or write:

**HUSTONVILLE ELDERLY APARTMENTS**  
**9600 Hustonville Road**  
**Hustonville, KY 40437**  
**606-346-2170**

TDD for Speech & Hearing Impaired 711



**Do you have available jobs?**

Call 606-661-5009 to let others know about job opportunities at your business.

## OAKVIEW APARTMENTS

401 Oak View Rd.  
Stanford, KY 40484

Family Households  
1 -2 Bedroom Apartments  
Accessible Units

Rental Assistance Available  
Please Call 606-365-1467

TDD/TYY # [1]800-648-6056

"This institution is an equal opportunity provider and employer"

**EQUAL HOUSING OPPORTUNITY**



### PUBLIC NOTICE

The Lincoln County Health Department is accepting SEALED bids for the following services:

Janitorial Services for the 2025-2026 Fiscal Year  
Lawn Care Services for the 2025-2026 Fiscal Year  
Parking Lot Resurfacing

Sealed bids will be accepted until 4:00pm on 05/15/2025. Bids should be sealed and delivered to 44 Health Way, Stanford KY, Attn: BIDS. Specifications can be found at [www.lincolncountyhealth.org](http://www.lincolncountyhealth.org) or by calling 606-365-3106. Site inspections can be scheduled by calling 606-365-3106.

## Services

### Home Improvement



**J&J Home Improvement**  
Interior and exterior painting, pressure washing, and small home repairs  
"Quality work by trusted professionals"  
**859-333-5690**

## State Classified

### Kentucky

#### BUSINESS SPACE FOR RENT

Frankfort Office Space for rent: Second floor with four large office areas, restroom. Office desks furnished. Located ½ mile from I-64 Lawrenceburg exit 53A. Electric, water, gas, utilities and internet included. \$2,200 per month. Call Bonnie Howard, Kentucky Press Association, 502-223-8821.

#### BUYING CARS

We Buy 8,000 cars a week. Sell your old, busted or junk car with no hoops, haggles or headaches. Sell your car to Peddle. Easy three step process. Instant offer. Free pickup. Fast payment. Call 1-844-440-0399

#### BUYING HOUSES

We Buy Houses for Cash AS IS! No repairs. No fuss. Any condition. Easy three step process: Call, get cash offer and get paid. Get your fair cash offer today by calling Liz Buys Houses: 1-888-287-5615

#### CABLE/UTILITIES

**DIRECTV OVER INTERNET** - Get your favorite live TV, sports and local channels. 99% signal reliability! CHOICE Package, \$84.99/mo for 12 months. HBO Max and Premium Channels included for 3 mos (w/CHOICE Package or higher.) No annual contract, no hidden fees! Some restrictions apply. Call IVS 1-888-340-6138

**AFFORDABLE TV & INTERNET.** If you are overpaying for your service, call now for a free quote and see how much you can save! 1-877-548-7494

Get DISH Satellite TV + Internet! Free Install, Free HD-DVR Upgrade, 80,000 On-Demand Movies, Plus Limited Time Up To \$600 In Gift Cards. Call Today! 1-855-633-4574

**DIRECTV-** All your entertainment. Nothing on your roof! Sign up for Directv and get your first three months of Max, Paramount+, Showtime, Starz, MGM+ and Cinemax included. Choice package \$84.99/mo. Some restrictions apply. Call DIRECTV 1-866-292-5435

#### CELLULAR

Get Boost Infinite! Unlimited Talk, Text and Data For Just \$25/mo! The Power Of 3 5G

### OPEN INSPECTION PERIOD

#### 2025 LINCOLN COUNTY TAX ROLL

The Lincoln County property tax roll will be available for inspection from **Friday, May 9, 2025, through Friday, May 23, 2025** in the office of the Lincoln County PVA. This is the January 1st assessment on which the 2025 property taxes will be due by December 31, 2025.

Any person may inspect the tax roll, under the supervision of the PVA or designated deputies, between the hours of **8:30 am to 4:00 pm, Monday through Friday, and from 9:00 am to 12 noon on Saturdays.** Our office is located at 201 E Main Street, Stanford Kentucky, across from Stanford Christian Church.

The PVA office will be open to conference with property owners as follows:

Friday, May 9, 8:00 am – 4:00 pm

Saturday, May 10, 9:00 am – 12:00 pm

Monday through Friday, May 12 to May 16, 8:00 am – 4:00 pm

Saturday, May 17, 9:00 am – 12:00 pm

Monday through Friday, May 19 to May 23, 8:00 am – 4:00 pm

Taxpayers disagreeing with their assessment may request a conference with the PVA, or designated deputies, about their assessment, **prior to, or during this Inspection Period.** Appointments are recommended but not required.

After conferencing with the PVA, any still dissatisfied taxpayer may file an appeal to the County Board of Assessment Appeals. That appeal must be filed with the Lincoln County Clerk's Office no later than one (1) workday following the end of inspection period, **which will be May 27, 2025.** (KRS 133.045)

Please contact your Lincoln County PVA, Mary Adams, at [maryl.adams@ky.gov](mailto:maryl.adams@ky.gov) or at (606) 365-4550, for more information.

### NOTICE TO CUSTOMERS OF KENTUCKY UTILITIES COMPANY

#### RECOVERY BY ENVIRONMENTAL SURCHARGE OF KENTUCKY UTILITIES COMPANY'S 2025 ENVIRONMENTAL COMPLIANCE PLAN

**PLEASE TAKE NOTICE** that in an April 30, 2025 Application, Kentucky Utilities Company ("KU") is seeking approval by the Kentucky Public Service Commission ("Commission") in Case No. 2025-00105, pursuant to Kentucky Revised Statute 278.183, of an amended compliance plan ("2025 Plan"). (Collectively, KU's Application and supporting testimony and exhibits are KU's "tariff filing.") If approved, KU will begin recovering capital costs associated with a new pollution control facility in the 2025 Plan under KU's existing Electric Rate Schedule ECR (also known as the Environmental Surcharge tariff) through an increase in the environmental surcharge on customers' bills beginning in December 2025.

KU filed an application with the Commission on February 28, 2025, in Case No. 2025-00045 seeking approval to construct a selective catalytic reduction system at the Ghent generating station to reduce nitrogen oxide (NOx) emissions, which are a precursor to ozone. In Case No. 2025-00105, KU is seeking an order approving the 2025 Plan to recover the costs of this new pollution control facility through its Environmental Surcharge tariff. This project will help ensure ongoing compliance with regulations issued under the federal Clean Air Act as amended, including the National Ambient Air Quality Standards for ozone.

The estimated total capital cost of this new pollution control facility is \$152.3 million. Additionally, KU is requesting recovery of future incremental capital and operation and maintenance expenses associated with this new pollution control facility. KU is also asking to recover the cost of publishing this customer notice through the Environmental Surcharge over 12 months and to have Environmental Surcharge recovery of future Commission-approved administrative expenses, including customer notice costs.

Beginning in December 2025, the initial bill impact for KU's Group 1 customers is estimated to be a 0.01% increase with a maximum increase of 0.81% in 2029. Group 1 includes Rate Schedules Residential Service (RS), Residential Time-of-Day Energy Service (RTODE), Residential Time-of-Day Demand Service (RTODD), Volunteer Fire Department Service (VFD), All Electric School (AES), and all Lighting Rates (i.e., LS, RLS, LE, and TE).

RS and VFD customers using 1,085 kWh/month could expect a monthly increase of \$0.01 up to \$1.09. RTODE customers using 1,043 kWh/month could expect a monthly increase of \$0.01 up to \$1.14. RTODD customers using 987 kWh/month could expect a monthly increase of \$0.02 up to \$1.80. AES customers using 25,620 kWh/month could expect a monthly increase of \$0.30 up to \$24.28. LS and RLS customers could expect a monthly increase of \$0.00 up to \$0.12. LE customers using 2,473 kWh/month could expect a monthly increase of \$0.02 up to \$1.59. TE customers using 147 kWh/month could expect a monthly increase of \$0.00 up to \$0.15.

Beginning in December 2025, the initial bill impact for KU's Group 2 customers is estimated to be a 0.01% increase with a maximum increase of 1.10% in 2029. Group 2 includes Rate Schedules General Service (GS), General Time-of-Day Energy Service (GTODE), General Time-of-Day Demand Service (GTODD), Power Service (PS), Time-of-Day Secondary Service (TODS), Time-of-Day Primary Service (TODP), Retail Transmission Service (RTS), Fluctuating Load Service (FLS), and Outdoor Sports Lighting Service (OSL).

GS customers using 1,657 kWh/month could expect a monthly increase of \$0.03 up to \$2.41. GTODD customers using 19,652 kWh/month could expect a monthly increase of \$0.31 up to \$25.26. PS-Secondary customers using 30,434 kWh/month could expect a monthly increase of \$0.39 up to \$32.35. PS-Primary customers using 35,028 kWh/month could expect a monthly increase of \$0.45 up to \$36.82. TODS customers using 189,538 kWh/month could expect a monthly increase of \$1.54 up to \$126.82. TODP customers using 1,242,574 kWh/month could expect a monthly increase of \$8.25 up to \$678.42. RTS customers using 7,387,224 kWh/month could expect a monthly increase of \$38.91 up to \$3,199.31. FLS-Transmission customers using 44,229,667 kWh/month could expect a monthly increase of \$237.46 up to \$19,525.53. OSL-Secondary customers using 4,627 kWh/month could expect a monthly increase of \$0.17 up to \$13.87.

The Application described in this Notice is proposed by KU, but the Commission may issue an order resulting in an environmental surcharge for customers other than the environmental surcharge described in this Notice.

Comments regarding KU's 2025 Plan and Application may be submitted to the Commission through its website or by mail to the Public Service Commission, Post Office Box 615, Frankfort, Kentucky 40602.

Any person may submit a timely written request for intervention to the Public Service Commission, Post Office Box 615, Frankfort, Kentucky 40602, establishing the grounds for the request including the status and interest of the party. If the Commission does not receive a written request for intervention within thirty (30) days of the initial publication of this Notice, the Commission may take final action on the Application.

Any person may examine KU's tariff filing at the Commission's offices located at 211 Sower Boulevard, Frankfort, Kentucky, Monday through Friday, 8:00 a.m. to 4:30 p.m., or through the Commission's website at <http://psc.ky.gov> or KU's website (<http://www.lge-ku.com>) after KU makes its tariff filing on April 30, 2025. KU has requested a deviation from the requirement to make the tariff filing available at its office at One Quality Street, Lexington, Kentucky 40507. If the Commission denies that request, KU will make the tariff filing available at its office upon request by any person.