

# The Wolfe County News

PO Box 129 - Campton, KY 41301  
USPS Permit Number - 689-460

C. D. LONG - EDITOR

POSTMASTER: Send changes of address and all forms to the above address. The Wolfe County News is published every Friday of each week except the July Fourth week. Periodicals Postage paid at the Campton Post Office, Campton, Kentucky. Editor reserves the right to edit and/or omit news items.



Many items are no longer made in the U.S.A. (Adobe Stock photo)

## Buying U.S.A.-made goods can be 'next to impossible'

Many items no longer made in U.S.A., but some get close to goal

Even when consumers want to buy purely American-made products, it can be tough, if not impossible, to get everything on the list. "Many Americans say they want to buy domestic products, but global supply chains built over decades of outsourcing have made it challenging," report Natasha Khan and Rachel Louise Ensign of The Wall Street Journal. "No matter how committed these shoppers are, some products just aren't made-in-U.S.A."

Domestic-only shoppers are enacious about their choices and often face uphill battles to get U.S.A.-made products. "Dianna Huff has been on a decade-long quest to buy only 'Made in America' goods," Khan and Ensign write. "She recalls crawling inside her fridge in search of a manufacturer's label only to see the tiny words 'Made in Mexico,' and returning a bathroom scale because, despite the assurance that the company made products in its U.S. facilities, it didn't."

Huff was able to purchase inens and socks made in the

U.S.; however, "for things such as her phone, glasses and weed whacker, it was next to impossible," the Journal reports. "Manufacturers moved production overseas where labor costs were much lower, spurred in part by free-trade agreements."

While many Americans would prefer to purchase U.S.A.-made products, their higher costs can be a deterrent. Khan and Ensign add, "In a May Morning Consult survey of about 1,000 U.S. adults, more than half said they intentionally bought domestically produced goods at least sometimes, but only 11% of those who were willing to pay more for U.S. goods could stomach a price increase greater than 15%. Scouring for American-made goods has become a hobby for some folks. "Anne Collins took up buying domestic after she retired," the Journal reports. To help others, she founded a Facebook group that promotes not shopping in China. She's taught group members how to sleuth for hard to find domestic products, such as, "mops, foil pans and artificial flowers."

Written by Heather Close  
Posted at 5/28/2025 12:55:00 PM  
No comments:

—Ky. Institute for Rural Journalism

# Tickborne Illnesses On The Rise

By Heather Oney  
Salyersville Independent

If you've seen more ticks so far this year, you're not alone, so Mortimer Media sat down with the Magoffin County Public Health Director to see if the anecdotes meet the statistics.

This area of Eastetrn Kentucky has primarily three types of ticks: the Dog Tick (can cause Rocky Mountain Spotted Fever), the Deer Tick or Black-legged Tick (can cause Lyme disease), and the Lone Star Tick (extremely small, microscopic in early stages of the life cycle and still small at full maturity – can cause ehrlichiosis and Alpha-gal Syndrome).

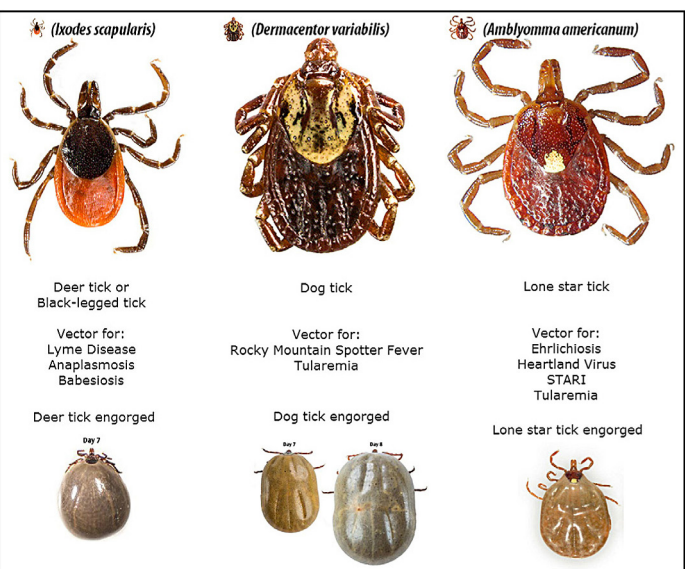
According to the Kentucky Department of Public Health, the number of cases of tickborne illnesses are increasing. The state's public health department recently wrapped up a multi-year surveillance program that went out and collected, examined and tested the ticks for diseases.

For instance, in the 160 Deer Ticks collected, 40 of them – 25% – tested positive for Lyme disease. Tickborne illnesses have gone up 125% from 2020 to 2023. Lyme disease jumped by 275-280% during the time-frame researchers looked at the tick population in Kentucky.

"The Deer Tick is the one that causes the Lyme disease and Lyme disease from 2000 to 2020, there were 391 confirmed cases in Kentucky and in 2024 there were 30 confirmed cases, so if you project that, Lyme disease is kind of doubling in numbers each year," Magoffin County Public Health Director James "Pete" Shepherd said. "It's because they say there's more Deer Ticks than ever before."

Ehrlichiosis is often caused by the Lone Star Tick, the smallest of all, especially when you take into account that they can spread diseases while in their larval state, which is nearly microscopic. Researchers found a similar increase in ehrlichiosis, with roughly 30 cases a year reported (in a study a few years old).

"Even though the Turkey Mite, or Lone Star, seems to be getting all the publicity, it seems like in their larva stage



there's so many of them and in the wild they're kind of in a wad and if you touch one of the larva pods, you get all of these little fellers all over you. That's why they're so prevalent," Shepherd said. "I guess the big one on the Lone Star Tick is the one you can get a meat allergy after being bitten and infected with the ehrlichiosis. That's a big scare for everyone because we like our steak, but it can cause a meat allergy from some bites and in some cases."

Shepherd explained catching it early is the best way to prevent the spread of diseases.

"The best time is immediately when you find it to get rid of it," Shepherd said. "The say a tick has to be on you 36 years hours – that's imbedded in your skin – to become a threat to your health, with the Lyme disease and Rocky Mountain Spotted Fever. If you find it early, take it off."

He also explained there is a right and wrong way to remove a tick.

"They don't want you to squeeze it with your fingers because if you've got a tick that's engorged a little bit and you squeeze it, it will shoot

all of that stuff that's inside it back into you, which makes it very high risk of becoming infected," Shepherd said.

If you have an imbedded tick, make sure to remove the entire tick. If the head remains in the skin, go ahead and clean the wound with alcohol and then remove the head. If you start feeling nauseated, a headache or any kind of flu-like symptoms or you notice redness around the wound area, immediately go to the doctor.

"Tick bites are treatable and they're treatable very easily if you get to them early with antibiotics," Shepherd said. "The main thing is watch where you pulled the tick off and if you see any kind of change, go ahead and see your physician. If left untreated, it can turn into a life-threatening situation."

Have A News Item To Report? A Meeting to Announce?

Call Us - 668-3595 or 743-3551

email: wolfenew@mrtc.com

# PUBLIC NOTICE

## PUBLIC NOTICE

### Request for Qualifications for Engineering/Design/Construction Services

The Wolfe County Tourism Commission is soliciting qualifications from consulting engineering/design/construction professionals for engineering/design/construction services on the Wolfe County Park Pickleball Court at Wolfe County Community Park located in Campton Kentucky. The proposed location for the Wolfe County Park Pickleball Court is an old tennis court that was renovated into a skate park. The existing space is oriented in a NNE-SSW directionality, it is approximately 120ft long x 106ft wide along that orientation and is surrounded by its original chain-link fence.

The Wolfe County Tourism Commission is seeking the technical assistance of a qualified consulting firm to assist them in the design and construction, including observation of qualified contractors. This project may take a phased approach to implementation based on available funding. Wolfe County Tourism Commission anticipates using a blended funding stream for this project and is seeking federal and state funding in addition to private funds.

### The scope of work should include among other critical items:

- A 'Tournament Play' surface with all lines, sections, netting and boundary demarcations
- Five (5) individual courts for individuals at play
- A resting or waiting area for individuals not at play
- Removal of existing skate park equipment
- Removal of existing fencing
- Installation of fencing and gates to facilitate operations and maintenance
- Lighting for night-time play

Designs shall comply with US Pickleball Association regulations and standards on surface materials, boundary demarcations and court dimensions. Refer to the US Pickleball Association website for more information. (<https://usapickleball.org/what-is-pickleball/official-rules/>) The Design shall comply with all American Disabilities Act (ADA) and all other relevant state and federal regulations.

### Minimum requirements include:

- Previous experience on similar projects
- Insurance coverage for all project aspects
- Provide warranty of work in written or bond form

All interested parties and firms should contact the Wolfe County Tourism Commission by one of the following means to obtain an information packet and/or schedule site visits:

**In-person:** 16 Court St, Campton, Kentucky (Mondays and Tuesdays by appointment)  
**Via USPS:** PO Box 429 Campton Kentucky 41301  
**Email:** Tourism@WolfeCountyKY.com  
**Phone:** (606) 668-7979

Respondents should submit their statement in a sealed envelope clearly marked "Wolfe County Tourism Commission – Engineering/Design/Construction Services – Wolfe County Park Pickleball Court Project" no later than 4:00 p.m. on **June 27, 2025**.

Submittals should be made to Kevin Gurtowski, Executive Director, Wolfe County Tourism Commission, PO Box 429 Campton, Kentucky, 41301.

**The Wolfe County Tourism Commission reserves the right to reject any or all qualifications not meeting the requirements of this Request for Qualifications for Consulting Engineering/Design/Construction Services.**

Kentucky Relay Service for the hearing and speech impaired: 1-800-648-6056.

Attention is particularly called to the requirements as to conditions of employment to be observed under the contract, Section 3, Segregated Facility, Section 109, Title VI, Section 504 and EO 11246.

Local, minority, and female owned firms are particularly encouraged to participate.

Interested firms must be registered with SAM.gov and be active with no active exclusions.

The Wolfe County Tourism Commission is an Equal Opportunity Employer.

2025

Licking Valley RECC's Annual Meeting

WEDNESDAY, JUNE 18

Malone Office Complex

537 Steele Rd.

West Liberty, KY 41472

Registration: 9 a.m.–4 p.m.

Business meeting: 4 p.m.

Doughnuts from 9–11 a.m.

Hotdogs starting at 11 a.m.

FREE energy-saving LED lightbulb and bucket for members who register!

John May

John May

LICKING VALLEY

Rural Electric Cooperative Corporation

A Touchstone Energy Cooperative