

Positive Adult Role Models Benefit Children

Children begin learning about life early on from the people who surround them. From the earliest age, youngsters mimic their parents and look to caregivers to guide their development and demonstrate proper behavior.

According to Words Alive, an organization inspiring a commitment to reading for life success, 90 percent of a child's brain develops by age five. During these first five years, abilities such as motivation, problem solving, communication, and self-regulation are formed. Having the right role models in a child's life influencing them through these formative years can set a foundation for success.

What is a role model?

A role model is a person whose behaviors are emulated by others, according to Connections Academy® by Pearson. When a child has a positive role model, there is a greater likelihood the youngster will engage in constructive behavior that mirrors the person he or she looks up to.

Why are positive role models important?

Adult-child interactions can help shape an individual. The Center of the Developing Child at Harvard University noted that if an adult's responses toward a child are inappropriate or unreliable, that child's brain architecture may be disrupted and their emotional

health impaired. The opposite is true when children have positive influences in their lives who respond properly to a child's behavior.

Choosing safe adults

It is vital to surround children with safe adults who can be positive role models. According to Perpetrators of Sexual Violence: Statistics by RAINN, 93 percent of juvenile sexual abuse cases knew the perpetrator, and 34 percent were family members. Safe adults are those who model healthy behaviors and actions to set an example for the child. Although a child's uncle may be a beloved family member, that person may not necessarily be the best to be alone and interact with a child frequently.



SCAN THIS QR code for access to the disaster site to report tornado damage.

Tornado

Continued from Page 1

personnel also were a presence to help with debris removal and getting the area opened up for crews to get to sites that needed attention.

While catastrophic events are never welcome, Union County has, since the Dawson Springs tornado, put in place many measures to help residents and provide resources for rescue, recovery, and clean-up. The county has shored up its communication systems, bought a mobile command center and put together plans to help its residents in scenarios like the one the county experienced Friday night. US 60 and KY 56 were cleared of debris quickly by state and county employees, making getting heavy equipment to damaged sites much easier with less wait time, and extra hospital personnel was called in to help with any injuries according to a person on scene Saturday morning. Crews worked from the time the storm hit until the early hours Saturday morning, taking a short break before returning to work as daylight broke. Though the loss of property will be substantial for county residents, the fact that no lives were lost and injuries were minor speaks to the preparations emergency personnel have made in the past three to four years.

This was the second tornado to hit the county in just over a year. The last one hit the Uniontown area on April 2, 2024, and then within the year, the county experienced an ice storm followed by heavy flooding, and in between there have been other storms with high winds that caused substantial property damage. The weather has not been kind to Kentuckians or to Union County.



What are good role model behaviors?

The following are some key characteristics of a positive role model.

- Lives a healthy lifestyle that focuses on physical and mental well-being. This is a person who eats healthy meals, lives an active lifestyle and makes good health choices like not smoking or drinking alcohol to excess.
- Treats others with respect and practices self-awareness about behaviors. When the role model makes a mistake, he or she owns that mistake and tries to remedy it.
- Establishes goals and shows a commitment to values. A good role model is passionate about what they do, has a strong work ethic, and showcases confidence.
- Tries to keep a positive attitude and is

accepting and supportive of others.

A positive role model also may think about the kinds of people they looked up to when they were younger and the traits those people exhibited. Then those similar traits can

be implemented when interacting with children and adults.

Positive role models can impact children's development and put them on the path to becoming well-adjusted, positive and dedicated members of society.



STURGIS MAYOR BILLY Adams is pictured here as he issued the oath of office to Sandy Patterson, who was appointed to the city's codes enforcement board last week.

Sturgis City Council

Continued from Page 1

showed levels of iron and manganese in the water; however, those minerals can be treated with pressure filters, according to Davis.

Davis added, "This project is worth moving forward." He and Mayor Adams were scheduled to visit Ellis Park in Henderson last week to view the water system operated at that facility. Ellis Park has its own independent water system. According to Davis, the city could develop a system which could be operated without being manned.

The pair have also visited with officials in Frankfort in an effort to get the local water plan reclassified in order to operate through automated systems and remote monitoring. "I think we can produce water for \$2.00 per gallon or less," Davis added. He noted the quantity of water is sufficient to service the needs of city residents and surrounding areas.

The city has two options concerning the water plant – modifying the existing structure or building a new facility. The project has a projected cost of \$7.7 million.

"This project will move at the speed of government," Davis said. City officials will begin to seek funding sources for the project.

There is also going to be re-testing of the wells. Those tests will run for seven consecutive days. City officials want to make sure the quality of the water is sufficient to continue with the project. Council members approved an expenditure of \$9,000 to pay for additional engineering, drilling, and lab analysis.

In final business, Mayor Adams expressed his appreciation to council members Dennis Odom and John Deibler for their efforts in maintaining the baseball fields in Sturgis. He also noted new signage for the community will soon be erected on U.S. 60. The work on that signage was completed compliments of Saturn Machine.

Wade Wallace, a member of the board of directors at Elkwood Golf Course, addressed the council concerning leakage at one of the levees at the wastewater treatment plant. He told members the leakage is affecting business at the golf course.

Mayor Adams noted the leakage is apparently cause by the excessive rainfall during the spring; however, the city will take samples from the overflow and will also speak with the engineer who is in charge of the renovation at the plant.

No further business came before the council, and the meeting was adjourned.

The next regular meeting of Sturgis City Council will be Wednesday, June 11, 4:00 P.M.

- PUBLIC NOTICE -

NOTICE OF SURPLUS PROPERTY

Sturgis City Council has voted to surplus and receive sealed bids on the following fire truck:

1-1999 Pierce Ladder Truck
Make-Pierce MFG, Inc. Model-Pierce
VIN-4P1CT02S5XA001089
Mileage 124,160

Sturgis City Hall has a repair/maintenance estimate from Clarke Power Services in Henderson, KY on the above-mentioned vehicle. If you would like a copy of that estimate call City Hall with your email address.

City Hall, 270-333-2166

Sealed Bids will be received up to June 11, 2025 @ 12:00 pm and opened at the regular scheduled City Council meeting, June 11, 2025 @ 4:00 pm

Bids can be delivered or mailed to:

Sturgis City Hall
PO Box 98
106 W 6th St
Sturgis, KY 42459

6/4c



Brian Lovell

Auction

Saturday, May 31st

10:00 A.M.

889 Bald Hill Road - Sturgis, KY 42459

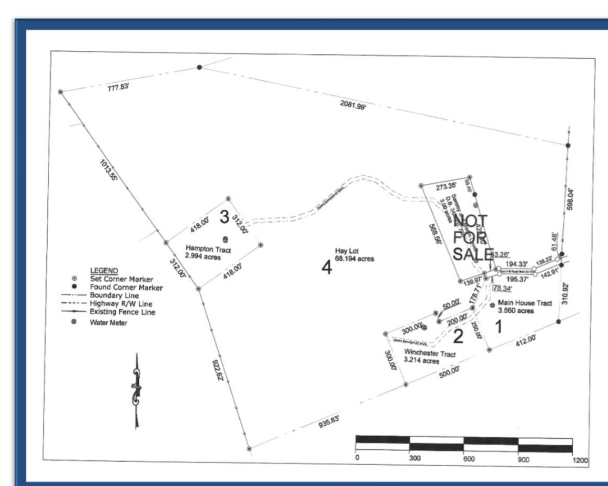
FOUR TRACTS OF LAND - PERSONAL PROPERTY NEW SURVEY

Tract 1-3.56 acs • 3 Bd, 1 & 3/4 Ba • Open Floor Plan • 2 Extra rooms • Utility Room • 2.5 Car Garage • Central Air • Propane Furnace • Front & Back Deck • Septic System • 3 Bay Open Front Shed • Oak Cabinets & Stainless Appliances • County Water

1BD 1BA Tiny Home. All Electric, plumbing and appliances.

MUST BE MOVED WITHIN 30 DAYS OF SALE DATE

- Tract 2-3.21 ACS
892 BALD HILL RD
1BR 1BA • All Electric
- Screen Porch
- Split AC/Heat Unit
- Metal Roof
- Stove-Refrigerator-Dishwasher • County Water
- Tract 3-2.99 ACS
890 BALD HILL RD
4BR 2BA • All Electric
- Central Heat and Air
- Stove-Refrigerator
- Garage/Tool Shed/ Building
- Glass Sunroom
- County Water



CALL RED HAT FOR YOUR PERSONAL TOUR!

Personal property

2001 Cadillac STS (98000 mi), Kubota Tractor L3940 w/ L742 Bucket (1300+/- hrs), 16ft Trailer with Drop Down Ramp, 16ft Trailer w/ Ramps (no floor), Grasshopper 54" Zerturn, 3 Horse Slant Trailer, 24ft Stratus Pontoon w/ 70 Evinrude OB, Paddle Boat, Farmall A (restorable), Lawn Mower Trailer (x2), 8' Grader Blade, Honda TRX 300, Kawasaki Bayou., Artic Cat 400 4wd, Kawasaki 700 (DNR), Countyline Bushhog, Countyline Finishing Mower, John Deer 318 Mower (DNR), 3 Push Mowers, Weed eaters, Blowers, **TOOLS:** Craftsman Joiner/planer, Craftsman Radial Arm Saw, Dewalt Planer, Assorted Electric tools, Assorted Hand Tools, Table Saw, Hose Reel, Welder, Plumbing and Electrical Supplies, Electric Concrete Mixer, Wheel Barrow, Sprayer, **FURNITURE & HOUSEHOLD:** Antique Clocks, Refrigerator, Barnwood Dresser, Chest of Drawers and Night Stand, Maple Dinette w/ Bench, Occasional Table, Bar top Table and 4 Stools, 4 Metal Stools, Brass Bed, Assorted Wood Beds and Bed Frames, Antique Post Office Counter, Piano Desk, Wood Drop Leaf Corner table, Wood Desk, Office Chair, Round Pedestal Table, Leroy Lovell Cradles, Steamer Trunk, Book Shelves, Hall Tree, Hutch, Coffee Tables, End Tables, Assorted Lawn Chairs, Outdoor Furniture, File cabinets, Patio Umbrella, Assorted Card and Plastic Tables, Assorted Pictures, Prints & paintings, Assorted Pots & Pans, Assorted Small Kitchen Appliances, Pyrex, #4 Crock, #2 Crock, #6 Crock, Stone Jug, Lemonade Crock, TV (x4), Ball canisters, Cake Plates, Candy Dish, Lemon Juicer, Lard Tub, Assorted Concrete Planters, Charbroil Grill, Massage Chair, Kerosene Heater, Oil Heaters, **MISCELLANEOUS:** Pot O' Silver Quarter Pusher, Winchester 12 Gun Safe, Large Wire Dog Crates, Tonka Toys, Toy Cars, Gas Cans, Coalmine Decanters, Fishing Poles, EZ Access 10' Ramp, Baseball & Football Cards, Vacuums



Sam McLeod, CAI, AARE, CES

Principal Broker/Auctioneer

213 East Main Street • Morganfield, KY 42437

270-389-0370 office • 270-997-0025 cell

www.redhatrealty.com

"We always gives you a little more than you expect"

Go to www.redhatrealty.com or www.auctionzip.com for more pictures and information